

# P70 S6 Kinase beta Antibody

Rabbit mAb

Catalog # AP91785

## Product Information

<b>Application</b>	WB, IHC, IF, FC, ICC, IHF
<b>Primary Accession</b>	<a href="#">Q9UBS0</a>
<b>Reactivity</b>	Rat, Human, Mouse
<b>Clonality</b>	Monoclonal
<b>Other Names</b>	p70 beta; P70S6K2; p70S6Kb; Rps6kb2; S6K beta 2; S6K beta; S6K2; SRK; STK14B;
<b>Isotype</b>	Rabbit IgG
<b>Host</b>	Rabbit
<b>Calculated MW</b>	53455

## Additional Information

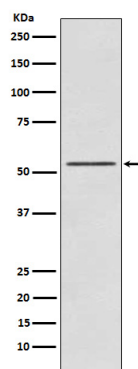
<b>Dilution</b>	WB 1:1000~1:5000 IHC 1:50~1:200 ICC/IF 1:50~1:200 FC 1:50
<b>Purification</b>	Affinity-chromatography
<b>Immunogen</b>	A synthesized peptide derived from human P70 S6 Kinase beta
<b>Description</b>	Phosphorylates specifically ribosomal protein S6.
<b>Storage Condition and Buffer</b>	Rabbit IgG in phosphate buffered saline , pH 7.4, 150mM NaCl, 0.02% sodium azide and 50% glycerol. Store at +4°C short term. Store at -20°C long term. Avoid freeze / thaw cycle.

## Protein Information

<b>Name</b>	RPS6KB2
<b>Synonyms</b>	STK14B
<b>Function</b>	Phosphorylates specifically ribosomal protein S6 (PubMed: <a href="#">29750193</a> ). Seems to act downstream of mTOR signaling in response to growth factors and nutrients to promote cell proliferation, cell growth and cell cycle progression in an alternative pathway regulated by MEAK7 (PubMed: <a href="#">29750193</a> ).
<b>Cellular Location</b>	Cytoplasm. Nucleus.

## Images

Western blot analysis of P70 S6 Kinase beta expression in K562 cell lysate.



Please note: All products are 'FOR RESEARCH USE ONLY. NOT FOR USE IN DIAGNOSTIC OR THERAPEUTIC PROCEDURES'.