

Thioredoxin 2 Antibody

Rabbit mAb

Catalog # AP91790

Product Information

Application	WB, IHC, IF, FC, ICC, IHF
Primary Accession	Q99757
Reactivity	Rat, Human, Mouse
Clonality	Monoclonal
Other Names	MT-TRX; MTRX; Thioredoxin2; TRX2; TXN2;
Isotype	Rabbit IgG
Host	Rabbit
Calculated MW	18383

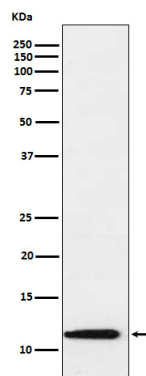
Additional Information

Dilution	WB 1:1000~1:5000 IHC 1:50~1:200 ICC/IF 1:50~1:200 FC 1:100
Purification	Affinity-chromatography
Immunogen	A synthesized peptide derived from human Thioredoxin 2
Description	Thioredoxins (Trx) are small, multi-functional proteins with oxidoreductase activity and are ubiquitous in essentially all living cells. Trx contains a redox-active disulfide/dithiol group within the conserved Cys-Gly-Pro-Cys active site.
Storage Condition and Buffer	Rabbit IgG in phosphate buffered saline , pH 7.4, 150mM NaCl, 0.02% sodium azide and 50% glycerol. Store at +4°C short term. Store at -20°C long term. Avoid freeze / thaw cycle.

Protein Information

Name	TXN2
Synonyms	TRX2
Function	Important for the control of mitochondrial reactive oxygen species homeostasis, apoptosis regulation and cell viability (PubMed: 12032145 , PubMed: 12080052 , PubMed: 26626369) Is involved in various redox reactions including the reduction of protein disulfide bonds, through the reversible oxidation of its active center dithiol to a disulfide (By similarity).
Cellular Location	Mitochondrion
Tissue Location	Widely expressed in adult (at protein level) and fetal tissues.

Images



Western blot analysis of Thioredoxin 2 expression in Raji cell lysate.

Please note: All products are 'FOR RESEARCH USE ONLY. NOT FOR USE IN DIAGNOSTIC OR THERAPEUTIC PROCEDURES'.