

HES5 Antibody

Rabbit mAb

Catalog # AP91801

Product Information

Application	WB, IHC, IP
Primary Accession	Q5TA89
Reactivity	Rat, Human, Mouse
Clonality	Monoclonal
Other Names	HES 5; Hes5;
Isotype	Rabbit IgG
Host	Rabbit
Calculated MW	18226

Additional Information

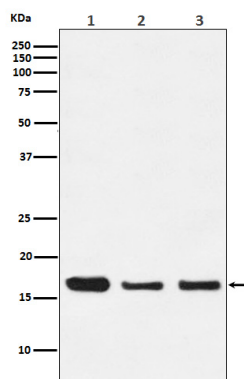
Dilution	WB 1:500~1:2000 IHC 1:50~1:200 IP 1:50
Purification	Affinity-chromatography
Immunogen	A synthesized peptide derived from human HES5
Description	Transcriptional repressor of genes that require a bHLH protein for their transcription.
Storage Condition and Buffer	Rabbit IgG in phosphate buffered saline , pH 7.4, 150mM NaCl, 0.02% sodium azide and 50% glycerol. Store at +4°C short term. Store at -20°C long term. Avoid freeze / thaw cycle.

Protein Information

Name	HES5
Synonyms	BHLHB38
Function	Transcriptional repressor of genes that require a bHLH protein for their transcription. Plays an important role as neurogenesis negative regulator (By similarity).
Cellular Location	Nucleus {ECO:0000255 PROSITE-ProRule:PRU00380, ECO:0000255 PROSITE-ProRule:PRU00981}
Tissue Location	Expressed in fetal heart and brain tumors.

Images

Western blot analysis of HES5 expression in (1) 293 cell lysate; (2) Mouse spleen lysate; (3) C6 cell lysate.



Please note: All products are 'FOR RESEARCH USE ONLY. NOT FOR USE IN DIAGNOSTIC OR THERAPEUTIC PROCEDURES'.