

# Destrin Antibody

Rabbit mAb

Catalog # AP91803

## Product Information

---

<b>Application</b>	WB, IHC, IF, FC, ICC, IP, IHF
<b>Primary Accession</b>	<a href="#">P60981</a>
<b>Reactivity</b>	Rat, Human, Mouse
<b>Clonality</b>	Monoclonal
<b>Other Names</b>	ACTDP; ADF; corn1; Destrin; DSN; Dstn; HEL32; Sid 23; sid23p;
<b>Isotype</b>	Rabbit IgG
<b>Host</b>	Rabbit
<b>Calculated MW</b>	18506

## Additional Information

---

<b>Dilution</b>	WB 1:500~1:2000 IHC 1:50~1:200 ICC/IF 1:100~1:500 IP 1:50 FC 1:100
<b>Purification</b>	Affinity-chromatography
<b>Immunogen</b>	A synthesized peptide derived from human Destrin
<b>Description</b>	Actin-depolymerizing protein. Severs actin filaments (F-actin) and binds to actin monomers (G-actin). Acts in a pH-independent manner.
<b>Storage Condition and Buffer</b>	Rabbit IgG in phosphate buffered saline , pH 7.4, 150mM NaCl, 0.02% sodium azide and 50% glycerol. Store at +4°C short term. Store at -20°C long term. Avoid freeze / thaw cycle.

## Protein Information

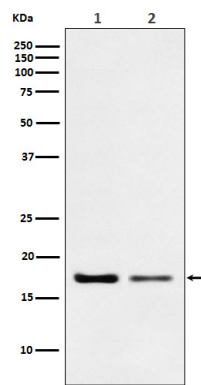
---

<b>Name</b>	DSTN
<b>Synonyms</b>	ACTDP, DSN
<b>Function</b>	Actin-depolymerizing protein. Severs actin filaments (F- actin) and binds to actin monomers (G-actin). Acts in a pH-independent manner.
<b>Tissue Location</b>	Widely distributed in various tissues.

## Images

---

Western blot analysis of Destrin expression in (1) HeLa cell lysate; (2) NIH/3T3 cell lysate.



Please note: All products are 'FOR RESEARCH USE ONLY. NOT FOR USE IN DIAGNOSTIC OR THERAPEUTIC PROCEDURES'.