

CENPC Antibody

Rabbit mAb

Catalog # AP91806

Product Information

Application	WB, IHC, IF, FC, ICC, IP, IHF
Primary Accession	Q03188
Reactivity	Rat, Human, Mouse
Clonality	Monoclonal
Other Names	CENP-C; CENPC1; hcp-4; ICEN7; MIF2;
Isotype	Rabbit IgG
Host	Rabbit
Calculated MW	106834

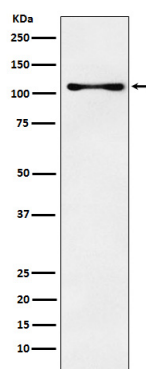
Additional Information

Dilution	WB 1:500~1:2000 IHC 1:100~1:500 ICC/IF 1:50~1:200 IP 1:50 FC 1:200
Purification	Affinity-chromatography
Immunogen	A synthesized peptide derived from human CENPC
Description	Component of the CENPA-NAC (nucleosome-associated) complex, a complex that plays a central role in assembly of kinetochore proteins, mitotic progression and chromosome segregation.
Storage Condition and Buffer	Rabbit IgG in phosphate buffered saline , pH 7.4, 150mM NaCl, 0.02% sodium azide and 50% glycerol. Store at +4°C short term. Store at -20°C long term. Avoid freeze / thaw cycle.

Protein Information

Name	CENPC
Synonyms	CENPC1, ICEN7
Function	Component of the CENPA-NAC (nucleosome-associated) complex, a complex that plays a central role in assembly of kinetochore proteins, mitotic progression and chromosome segregation. The CENPA-NAC complex recruits the CENPA-CAD (nucleosome distal) complex and may be involved in incorporation of newly synthesized CENPA into centromeres. CENPC recruits DNA methylation and DNMT3B to both centromeric and pericentromeric satellite repeats and regulates the histone code in these regions.
Cellular Location	Nucleus. Chromosome, centromere, kinetochore. Chromosome, centromere. Note=Localizes exclusively in the kinetochore domain of centromeres.

Images



Western blot analysis of CENPC expression in K562 cell lysate.

Please note: All products are 'FOR RESEARCH USE ONLY. NOT FOR USE IN DIAGNOSTIC OR THERAPEUTIC PROCEDURES'.