

# Cellubrevin Antibody

Rabbit mAb

Catalog # AP91815

## Product Information

---

<b>Application</b>	WB, IF, FC, ICC, IP
<b>Primary Accession</b>	<a href="#">Q15836</a>
<b>Reactivity</b>	Human
<b>Clonality</b>	Monoclonal
<b>Other Names</b>	CEB; Cellubrevin; Synaptobrevin 3; VAMP3;
<b>Isotype</b>	Rabbit IgG
<b>Host</b>	Rabbit
<b>Calculated MW</b>	11309

## Additional Information

---

<b>Dilution</b>	WB 1:500~1:2000 ICC/IF 1:50~1:200 IP 1:40 FC 1:50
<b>Purification</b>	Affinity-chromatography
<b>Immunogen</b>	A synthesized peptide derived from human Cellubrevin
<b>Description</b>	SNARE involved in vesicular transport from the late endosomes to the trans-Golgi network.
<b>Storage Condition and Buffer</b>	Rabbit IgG in phosphate buffered saline , pH 7.4, 150mM NaCl, 0.02% sodium azide and 50% glycerol. Store at +4°C short term. Store at -20°C long term. Avoid freeze / thaw cycle.

## Protein Information

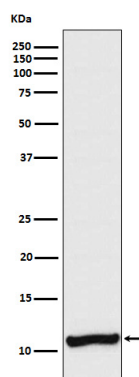
---

<b>Name</b>	VAMP3
<b>Synonyms</b>	SYB3
<b>Function</b>	SNARE involved in vesicular transport from the late endosomes to the trans-Golgi network.
<b>Cellular Location</b>	Early endosome membrane; Single-pass type IV membrane protein. Recycling endosome membrane; Single-pass type IV membrane protein. Synapse, synaptosome

## Images

---

Western blot analysis of Cellubrevin expression in A375 cell lysate.



Please note: All products are 'FOR RESEARCH USE ONLY. NOT FOR USE IN DIAGNOSTIC OR THERAPEUTIC PROCEDURES'.