

FHL2 Antibody

Rabbit mAb

Catalog # AP91818

Product Information

Application	WB, IF, ICC, IP
Primary Accession	Q14192
Reactivity	Rat, Human, Mouse
Clonality	Monoclonal
Other Names	AAG11; DRAL; Fhl2; SLIM3;
Isotype	Rabbit IgG
Host	Rabbit
Calculated MW	32193

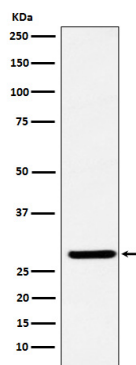
Additional Information

Dilution	WB 1:500~1:1000 ICC/IF 1:50~1:200 IP 1:40
Purification	Affinity-chromatography
Immunogen	A synthesized peptide derived from human FHL2
Description	May function as a molecular transmitter linking various signaling pathways to transcriptional regulation. Negatively regulates the transcriptional repressor E4F1 and may function in cell growth.
Storage Condition and Buffer	Rabbit IgG in phosphate buffered saline , pH 7.4, 150mM NaCl, 0.02% sodium azide and 50% glycerol. Store at +4°C short term. Store at -20°C long term. Avoid freeze / thaw cycle.

Protein Information

Name	FHL2
Synonyms	DRAL, SLIM3
Function	May function as a molecular transmitter linking various signaling pathways to transcriptional regulation. Negatively regulates the transcriptional repressor E4F1 and may function in cell growth. Inhibits the transcriptional activity of FOXO1 and its apoptotic function by enhancing the interaction of FOXO1 with SIRT1 and FOXO1 deacetylation. Negatively regulates the calcineurin/NFAT signaling pathway in cardiomyocytes (PubMed: 28717008).
Cellular Location	Cytoplasm. Nucleus. Cytoplasm, myofibril, sarcomere, Z line {ECO:0000250 UniProtKB:O35115}
Tissue Location	Expressed in skeletal muscle and heart.

Images



Western blot analysis of FHL2 expression in SW480 cell lysate.

Please note: All products are 'FOR RESEARCH USE ONLY. NOT FOR USE IN DIAGNOSTIC OR THERAPEUTIC PROCEDURES'.