

Gelsolin Antibody

Rabbit mAb

Catalog # AP91830

Product Information

Application	WB, IHC, IF, FC, ICC, IHF
Primary Accession	P06396
Reactivity	Human, Mouse
Clonality	Monoclonal
Other Names	ADF; AGEL; Brevin; Gelsolin; Gsn;
Isotype	Rabbit IgG
Host	Rabbit
Calculated MW	85698

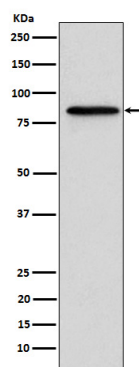
Additional Information

Dilution	WB 1:1000~1:5000 IHC 1:50~1:200 ICC/IF 1:50~1:200 FC 1:50
Purification	Affinity-chromatography
Immunogen	A synthesized peptide derived from human Gelsolin
Description	Calcium-regulated, actin-modulating protein that binds to the plus (or barbed) ends of actin monomers or filaments, preventing monomer exchange (end-blocking or capping). It can promote the assembly of monomers into filaments (nucleation) as well as sever filaments already formed. Plays a role in ciliogenesis.
Storage Condition and Buffer	Rabbit IgG in phosphate buffered saline , pH 7.4, 150mM NaCl, 0.02% sodium azide and 50% glycerol. Store at +4°C short term. Store at -20°C long term. Avoid freeze / thaw cycle.

Protein Information

Name	GSN
Function	Calcium-regulated, actin-modulating protein that binds to the plus (or barbed) ends of actin monomers or filaments, preventing monomer exchange (end-blocking or capping). It can promote the assembly of monomers into filaments (nucleation) as well as sever filaments already formed (PubMed: 19666512). Plays a role in ciliogenesis (PubMed: 20393563).
Cellular Location	[Isoform 2]: Cytoplasm, cytoskeleton.
Tissue Location	Phagocytic cells, platelets, fibroblasts, nonmuscle cells, smooth and skeletal muscle cells

Images



Western blot analysis of Gelsolin expression in A431 cell lysate.

Please note: All products are 'FOR RESEARCH USE ONLY. NOT FOR USE IN DIAGNOSTIC OR THERAPEUTIC PROCEDURES'.