

CD162 Antibody

Rabbit mAb

Catalog # AP91831

Product Information

Application	WB, IHC, IF, ICC, IP, IHF
Primary Accession	Q14242
Reactivity	Human
Clonality	Monoclonal
Other Names	CD162; CLA; PSGL1; SELPLG;
Isotype	Rabbit IgG
Host	Rabbit
Calculated MW	43201

Additional Information

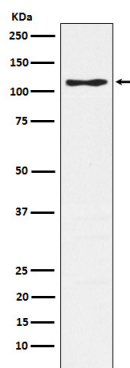
Dilution	WB 1:500~1:1000 IHC 1:50~1:200 ICC/IF 1:50~1:200 IP 1:40
Purification	Affinity-chromatography
Immunogen	A synthesized peptide derived from human CD162
Description	A SLe(x)-type proteoglycan, which through high affinity, calcium-dependent interactions with E-, P- and L-selectins, mediates rapid rolling of leukocytes over vascular surfaces during the initial steps in inflammation. Critical for the initial leukocyte capture.
Storage Condition and Buffer	Rabbit IgG in phosphate buffered saline , pH 7.4, 150mM NaCl, 0.02% sodium azide and 50% glycerol. Store at +4°C short term. Store at -20°C long term. Avoid freeze / thaw cycle.

Protein Information

Name	SELPLG
Function	A SLe(x)-type proteoglycan, which through high affinity, calcium-dependent interactions with E-, P- and L-selectins, mediates rapid rolling of leukocytes over vascular surfaces during the initial steps in inflammation. Critical for the initial leukocyte capture.
Cellular Location	Membrane; Single-pass type I membrane protein.
Tissue Location	Expressed on neutrophils, monocytes and most lymphocytes

Images

Western blot analysis of CD162 expression in Jurkat cell lysate.



Please note: All products are 'FOR RESEARCH USE ONLY. NOT FOR USE IN DIAGNOSTIC OR THERAPEUTIC PROCEDURES'.