

Casein Kinase 2 beta Antibody

Rabbit mAb

Catalog # AP91832

Product Information

Application	WB, IHC, IP
Primary Accession	P67870
Reactivity	Rat, Human, Mouse
Clonality	Monoclonal
Other Names	CK II beta; CK2B; CK2N; CSK2B; CSNK 2B; csnk2b; G5A; Phosvitin; Protein G5a;
Isotype	Rabbit IgG
Host	Rabbit
Calculated MW	24942

Additional Information

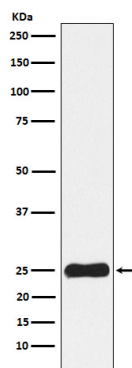
Dilution	WB 1:500~1:2000 IHC 1:50~1:200 IP 1:50
Purification	Affinity-chromatography
Immunogen	A synthesized peptide derived from human Casein Kinase 2 beta
Description	Participates in Wnt signaling (By similarity). Plays a complex role in regulating the basal catalytic activity of the alpha subunit.
Storage Condition and Buffer	Rabbit IgG in phosphate buffered saline , pH 7.4, 150mM NaCl, 0.02% sodium azide and 50% glycerol. Store at +4°C short term. Store at -20°C long term. Avoid freeze / thaw cycle.

Protein Information

Name	CSNK2B (HGNC:2460)
Synonyms	CK2N, G5A
Function	Regulatory subunit of casein kinase II/CK2. As part of the kinase complex regulates the basal catalytic activity of the alpha subunit a constitutively active serine/threonine-protein kinase that phosphorylates a large number of substrates containing acidic residues C-terminal to the phosphorylated serine or threonine (PubMed: 11239457 , PubMed: 16818610). Participates in Wnt signaling (By similarity).
Cellular Location	Nucleus.

Images

Western blot analysis of Casein Kinase 2 beta expression in HepG2 cell lysate.



Please note: All products are 'FOR RESEARCH USE ONLY. NOT FOR USE IN DIAGNOSTIC OR THERAPEUTIC PROCEDURES'.