

Nicastrin Antibody

Rabbit mAb

Catalog # AP91834

Product Information

Application	WB, IF, ICC
Primary Accession	Q92542
Reactivity	Human
Clonality	Monoclonal
Other Names	APH2; Ncstn; NCT; Nicastrin;
Isotype	Rabbit IgG
Host	Rabbit
Calculated MW	78411

Additional Information

Dilution	WB 1:500~1:2000 ICC/IF 1:50~1:200
Purification	Affinity-chromatography
Immunogen	A synthesized peptide derived from human Nicastrin
Description	Essential subunit of the gamma-secretase complex, an endoprotease complex that catalyzes the intramembrane cleavage of integral membrane proteins such as Notch receptors and APP (beta-amyloid precursor protein). It probably represents a stabilizing cofactor required for the assembly of the gamma-secretase complex.
Storage Condition and Buffer	Rabbit IgG in phosphate buffered saline , pH 7.4, 150mM NaCl, 0.02% sodium azide and 50% glycerol. Store at +4°C short term. Store at -20°C long term. Avoid freeze / thaw cycle.

Protein Information

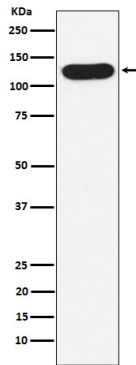
Name	NCSTN
Synonyms	KIAA0253
Function	Essential subunit of the gamma-secretase complex, an endoprotease complex that catalyzes the intramembrane cleavage of integral membrane proteins such as Notch receptors and APP (amyloid- beta precursor protein) (PubMed: 10993067 , PubMed: 12679784 , PubMed: 25043039 , PubMed: 26280335 , PubMed: 30598546 , PubMed: 30630874). The gamma-secretase complex plays a role in Notch and Wnt signaling cascades and regulation of downstream processes via its role in processing key regulatory proteins, and by regulating cytosolic CTNNB1 levels.
Cellular Location	Membrane; Single-pass type I membrane protein. Cytoplasmic vesicle membrane; Single-pass type I membrane protein. Melanosome. Note=Identified by mass spectrometry in melanosome fractions from stage I

to stage IV

Tissue Location

Detected in brain (at protein level) (PubMed:10993067). Widely expressed (PubMed:11396676)

Images



Western blot analysis of Nicastrin expression in A431 cell lysate.

Please note: All products are 'FOR RESEARCH USE ONLY. NOT FOR USE IN DIAGNOSTIC OR THERAPEUTIC PROCEDURES'.