

Mesothelin Antibody

Rabbit mAb

Catalog # AP91838

Product Information

| | |
|--------------------------|---|
| Application | WB, IHC, IP |
| Primary Accession | Q13421 |
| Reactivity | Human |
| Clonality | Monoclonal |
| Other Names | CAK1; Mesothelin; MPF; Msln; SMR; SMRP; |
| Isotype | Rabbit IgG |
| Host | Rabbit |
| Calculated MW | 68986 |

Additional Information

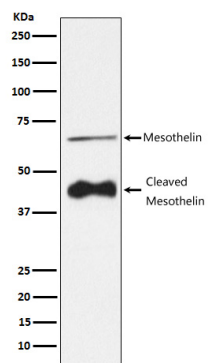
| | |
|-------------------------------------|---|
| Dilution | WB 1:500~1:2000 IHC 1:100~1:500 IP 1:50 |
| Purification | Affinity-chromatography |
| Immunogen | A synthesized peptide derived from human Mesothelin |
| Description | Membrane-anchored forms may play a role in cellular adhesion. |
| Storage Condition and Buffer | Rabbit IgG in phosphate buffered saline , pH 7.4, 150mM NaCl, 0.02% sodium azide and 50% glycerol. Store at +4°C short term. Store at -20°C long term. Avoid freeze / thaw cycle. |

Protein Information

| | |
|--------------------------|---|
| Name | MSLN |
| Synonyms | MPF |
| Function | Membrane-anchored forms may play a role in cellular adhesion. |
| Cellular Location | Cell membrane; Lipid-anchor, GPI-anchor. Golgi apparatus [Isoform 3]: Secreted. |
| Tissue Location | Expressed in lung. Expressed at low levels in heart, placenta and kidney. Expressed in mesothelial cells. Highly expressed in mesotheliomas, ovarian cancers, and some squamous cell carcinomas (at protein level). |

Images

Western blot analysis of Mesothelin expression in HeLa cell lysate.



Please note: All products are 'FOR RESEARCH USE ONLY. NOT FOR USE IN DIAGNOSTIC OR THERAPEUTIC PROCEDURES'.