

Complement C3 Antibody

Rabbit mAb

Catalog # AP91846

Product Information

Application	WB, IF, FC, ICC
Primary Accession	P01024
Reactivity	Human
Clonality	Monoclonal
Other Names	AHUS5; ARMD9; ASP; C3; C3adesArg; C3bc; CPAMD1; Plp;
Isotype	Rabbit IgG
Host	Rabbit
Calculated MW	187148

Additional Information

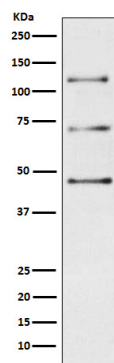
Dilution	WB 1:500~1:2000 ICC/IF 1:50~1:200 FC 1:20
Purification	Affinity-chromatography
Immunogen	A synthesized peptide derived from human C3 / C3a
Description	C3 plays a central role in the activation of the complement system. Its processing by C3 convertase is the central reaction in both classical and alternative complement pathways. After activation C3b can bind covalently, via its reactive thioester, to cell surface carbohydrates or immune aggregates.
Storage Condition and Buffer	Rabbit IgG in phosphate buffered saline , pH 7.4, 150mM NaCl, 0.02% sodium azide and 50% glycerol. Store at +4°C short term. Store at -20°C long term. Avoid freeze / thaw cycle.

Protein Information

Name	C3 {ECO:0000303 PubMed:2579379, ECO:0000312 HGNC:HGNC:1318}
Function	Precursor of non-enzymatic components of the classical, alternative, lectin and GZMK complement pathways, which consist in a cascade of proteins that leads to phagocytosis and breakdown of pathogens and signaling that strengthens the adaptive immune system.
Cellular Location	Secreted. [C3a anaphylatoxin]: Secreted
Tissue Location	Plasma..

Images

Western blot analysis of C3 / C3a expression in Human plasma lysate.



Please note: All products are 'FOR RESEARCH USE ONLY. NOT FOR USE IN DIAGNOSTIC OR THERAPEUTIC PROCEDURES'.