

Plexin A1 Antibody

Rabbit mAb

Catalog # AP91862

Product Information

Application	WB, IF, FC, ICC
Primary Accession	Q9UIW2
Reactivity	Rat, Human, Mouse
Clonality	Monoclonal
Other Names	NOV; NOV; Plexin-A1; Plexin1; PlexinA1; PLXN1; Plxna1;
Isotype	Rabbit IgG
Host	Rabbit
Calculated MW	211067

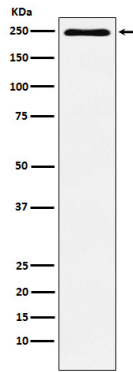
Additional Information

Dilution	WB 1:500~1:2000 ICC/IF 1:50~1:200 FC 1:50
Purification	Affinity-chromatography
Immunogen	A synthesized peptide derived from human Plexin A1
Description	Plays a role in axon guidance, invasive growth and cell migration.
Storage Condition and Buffer	Rabbit IgG in phosphate buffered saline , pH 7.4, 150mM NaCl, 0.02% sodium azide and 50% glycerol. Store at +4°C short term. Store at -20°C long term. Avoid freeze / thaw cycle.

Protein Information

Name	PLXNA1 (HGNC:9099)
Synonyms	NOV, PLXN1
Function	Coreceptor for SEMA3A, SEMA3C, SEMA3F and SEMA6D. Necessary for signaling by class 3 semaphorins and subsequent remodeling of the cytoskeleton. Plays a role in axon guidance, invasive growth and cell migration. Class 3 semaphorins bind to a complex composed of a neuropilin and a plexin. The plexin modulates the affinity of the complex for specific semaphorins, and its cytoplasmic domain is required for the activation of down-stream signaling events in the cytoplasm. Acts as coreceptor of TREM2 for SEMA6D in dendritic cells and is involved in the generation of immune responses and skeletal homeostasis.
Cellular Location	Cell membrane {ECO:0000250 UniProtKB:P70206}; Single-pass type I membrane protein
Tissue Location	Detected in fetal brain, lung, liver and kidney.

Images



Western blot analysis of Plexin A1 expression in HUVEC cell lysate.

Please note: All products are 'FOR RESEARCH USE ONLY. NOT FOR USE IN DIAGNOSTIC OR THERAPEUTIC PROCEDURES'.