

RhoGDI Antibody

Rabbit mAb

Catalog # AP91869

Product Information

| | |
|--------------------------|-----------------------------------|
| Application | WB, IHC, IF, ICC, IHF |
| Primary Accession | P52565 |
| Reactivity | Rat, Human, Mouse |
| Clonality | Monoclonal |
| Other Names | ARHGDIA; GDIA1; RHOGDI; RHOGDI-1; |
| Isotype | Rabbit IgG |
| Host | Rabbit |
| Calculated MW | 23207 |

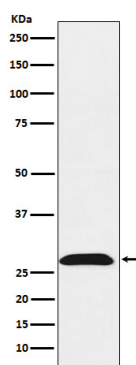
Additional Information

| | |
|-------------------------------------|---|
| Dilution | WB 1:500~1:2000 IHC 1:50~1:200 ICC/IF 1:50~1:200 |
| Purification | Affinity-chromatography |
| Immunogen | A synthesized peptide derived from human RhoGDI |
| Description | Regulates the GDP/GTP exchange reaction of the Rho proteins by inhibiting the dissociation of GDP from them, and the subsequent binding of GTP to them. |
| Storage Condition and Buffer | Rabbit IgG in phosphate buffered saline , pH 7.4, 150mM NaCl, 0.02% sodium azide and 50% glycerol. Store at +4°C short term. Store at -20°C long term. Avoid freeze / thaw cycle. |

Protein Information

| | |
|--------------------------|--|
| Name | ARHGDIA |
| Synonyms | GDIA1 |
| Function | Controls Rho proteins homeostasis. Regulates the GDP/GTP exchange reaction of the Rho proteins by inhibiting the dissociation of GDP from them, and the subsequent binding of GTP to them. Retains Rho proteins such as CDC42, RAC1 and RHOA in an inactive cytosolic pool, regulating their stability and protecting them from degradation. Actively involved in the recycling and distribution of activated Rho GTPases in the cell, mediates extraction from membranes of both inactive and activated molecules due its exceptionally high affinity for prenylated forms. Through the modulation of Rho proteins, may play a role in cell motility regulation. In glioma cells, inhibits cell migration and invasion by mediating the signals of SEMA5A and PLXNB3 that lead to inactivation of RAC1. |
| Cellular Location | Cytoplasm. |

Images



Western blot analysis of RhoGDI expression in HeLa cell lysate.

Please note: All products are 'FOR RESEARCH USE ONLY. NOT FOR USE IN DIAGNOSTIC OR THERAPEUTIC PROCEDURES'.