

DEK Antibody (C-term)

Affinity Purified Rabbit Polyclonal Antibody (Pab)

Catalog # AP9186b

Product Information

Application	IHC-P, FC, IF, WB, E
Primary Accession	P35659
Reactivity	Human
Host	Rabbit
Clonality	Polyclonal
Isotype	Rabbit IgG
Clone Names	RB23679
Calculated MW	42674
Antigen Region	336-364

Additional Information

Gene ID	7913
Other Names	Protein DEK, DEK
Target/Specificity	This DEK antibody is generated from rabbits immunized with a KLH conjugated synthetic peptide between 336-364 amino acids from the C-terminal region of human DEK.
Dilution	IHC-P~~1:100~500 FC~~1:10~50 IF~~1:10~50 WB~~1:1000 E~~Use at an assay dependent concentration.
Format	Purified polyclonal antibody supplied in PBS with 0.09% (W/V) sodium azide. This antibody is purified through a protein A column, followed by peptide affinity purification.
Storage	Maintain refrigerated at 2-8°C for up to 2 weeks. For long term storage store at -20°C in small aliquots to prevent freeze-thaw cycles.
Precautions	DEK Antibody (C-term) is for research use only and not for use in diagnostic or therapeutic procedures.

Protein Information

Name	DEK
Function	Involved in chromatin organization.
Cellular Location	Nucleus. Note=Enriched in regions where chromatin is decondensed or sparse in the interphase nuclei

Tissue Location

Ubiquitous. Expressed at relatively high levels.

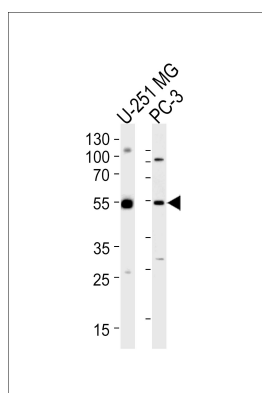
Background

DEK is a protein with one SAP domain. This protein binds to cruciform and superhelical DNA and induces positive supercoils into closed circular DNA, and is also involved in splice site selection during mRNA processing. Chromosomal aberrations involving this region, increased expression of this gene, and the presence of antibodies against this protein are all associated with various diseases.

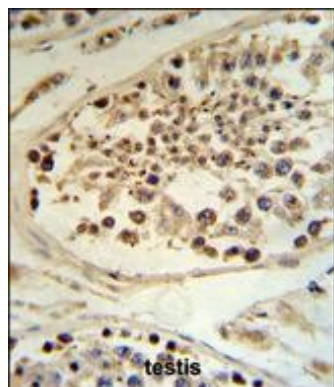
References

Sawatsubashi,S., et.al., Genes Dev. 24 (2), 159-170 (2010)
Khodadoust,M.S., et.al., Cancer Res. 69 (16), 6405-6413 (2009)

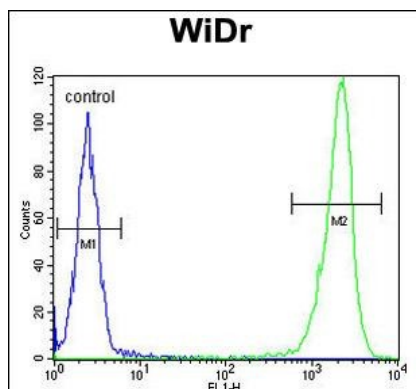
Images



Western blot analysis of lysates from U-251 MG, PC-3 cell line (from left to right), using DEK Antibody (C-term)(Cat. #AP9186b). AP9186b was diluted at 1:1000 at each lane. A goat anti-rabbit IgG H&L(HRP) at 1:5000 dilution was used as the secondary antibody. Lysates at 35ug per lane.

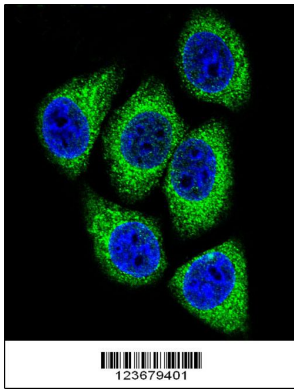


DEK Antibody (C-term) (Cat. #AP9186b) IHC analysis in formalin fixed and paraffin embedded human testis tissue followed by peroxidase conjugation of the secondary antibody and DAB staining. This data demonstrates the use of the DEK Antibody (C-term) for immunohistochemistry. Clinical relevance has not been evaluated.



DEK Antibody (C-term) (Cat. #AP9186b) flow cytometric analysis of WiDr cells (right histogram) compared to a negative control cell (left histogram).FITC-conjugated goat-anti-rabbit secondary antibodies were used for the analysis.

Confocal immunofluorescent analysis of DEK Antibody (C-term) (Cat#AP9186b) with Hela cell followed by Alexa



Fluor 488-conjugated goat anti-rabbit IgG (green). DAPI was used to stain the cell nuclear (blue).

Please note: All products are 'FOR RESEARCH USE ONLY. NOT FOR USE IN DIAGNOSTIC OR THERAPEUTIC PROCEDURES'.