

Nucleostemin Antibody

Rabbit mAb

Catalog # AP91874

Product Information

Application	WB, IF, FC, ICC
Primary Accession	Q9BVP2
Reactivity	Human
Clonality	Monoclonal
Other Names	E2IG3; GNL3; NNP47; NS; Nucleostemin;
Isotype	Rabbit IgG
Host	Rabbit
Calculated MW	61993

Additional Information

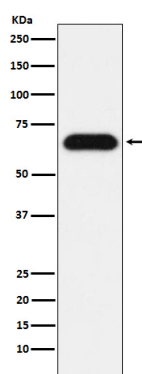
Dilution	WB 1:500~1:2000 ICC/IF 1:50~1:200 FC 1:50
Purification	Affinity-chromatography
Immunogen	A synthesized peptide derived from human Nucleostemin
Description	May be required to maintain the proliferative capacity of stem cells and may play an important role in tumorigenesis.
Storage Condition and Buffer	Rabbit IgG in phosphate buffered saline , pH 7.4, 150mM NaCl, 0.02% sodium azide and 50% glycerol. Store at +4°C short term. Store at -20°C long term. Avoid freeze / thaw cycle.

Protein Information

Name	GNL3
Synonyms	E2IG3, NS
Function	May be required to maintain the proliferative capacity of stem cells. Stabilizes MDM2 by preventing its ubiquitination, and hence proteasomal degradation (By similarity).
Cellular Location	Nucleus {ECO:0000250 UniProtKB:Q811S9}. Nucleus, nucleolus. Note=Shuttles between the nucleus and nucleolus. {ECO:0000250 UniProtKB:Q811S9}
Tissue Location	Increased levels in lung tissue in cancer patients.

Images

Western blot analysis of Nucleostemin expression in HeLa



cell lysate.

Please note: All products are 'FOR RESEARCH USE ONLY. NOT FOR USE IN DIAGNOSTIC OR THERAPEUTIC PROCEDURES'.