

Glycophorin C Antibody

Rabbit mAb

Catalog # AP91883

Product Information

Application	WB, IHC, IF, FC, ICC, IP, IHF
Primary Accession	P04921
Reactivity	Human
Clonality	Monoclonal
Other Names	GYPC; CD236; CD236R; GE; GPC; GYPD;
Isotype	Rabbit IgG
Host	Rabbit
Calculated MW	13811

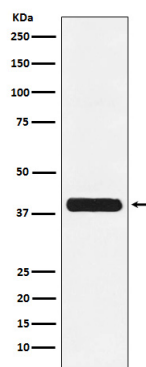
Additional Information

Dilution	WB 1:500~1:2000 IHC 1:50~1:200 ICC/IF 1:50~1:200 IP 1:50 FC 1:50
Purification	Affinity-chromatography
Immunogen	A synthesized peptide derived from human Glycophorin C
Description	This protein is a minor sialoglycoprotein in human erythrocyte membranes. The blood group Gerbich antigens and receptors for Plasmodium falciparum merozoites are most likely located within the extracellular domain.
Storage Condition and Buffer	Rabbit IgG in phosphate buffered saline , pH 7.4, 150mM NaCl, 0.02% sodium azide and 50% glycerol. Store at +4°C short term. Store at -20°C long term. Avoid freeze / thaw cycle.

Protein Information

Name	GYPC
Synonyms	GLPC, GPC
Function	This protein is a minor sialoglycoprotein in human erythrocyte membranes. The blood group Gerbich antigens and receptors for Plasmodium falciparum merozoites are most likely located within the extracellular domain. Glycophorin-C plays an important role in regulating the stability of red cells.
Cellular Location	Cell membrane; Single-pass type III membrane protein. Note=Linked to the membrane via band 4.1
Tissue Location	Glycophorin-C is expressed in erythrocytes. Glycophorin-D and IsoGPC are ubiquitously expressed

Images



Western blot analysis of Glycophorin C expression in K562 cell lysate.

Please note: All products are 'FOR RESEARCH USE ONLY. NOT FOR USE IN DIAGNOSTIC OR THERAPEUTIC PROCEDURES'.