

PICK1 Antibody

Rabbit mAb

Catalog # AP91884

Product Information

Application	WB, FC, IP
Primary Accession	Q9NRD5
Reactivity	Rat, Human, Mouse
Clonality	Monoclonal
Other Names	PICK 1; Pick1; PRKCABP;
Isotype	Rabbit IgG
Host	Rabbit
Calculated MW	46600

Additional Information

Dilution	WB 1:500~1:2000 IP 1:50 FC 1:50
Purification	Affinity-chromatography
Immunogen	A synthesized peptide derived from human PICK1
Description	Probable adapter protein that bind to and organize the subcellular localization of a variety of membrane proteins containing some PDZ recognition sequence. Involved in the clustering of various receptors, possibly by acting at the receptor internalization level. Plays a role in synaptic plasticity by regulating the trafficking and internalization of AMPA receptors.
Storage Condition and Buffer	Rabbit IgG in phosphate buffered saline , pH 7.4, 150mM NaCl, 0.02% sodium azide and 50% glycerol. Store at +4°C short term. Store at -20°C long term. Avoid freeze / thaw cycle.

Protein Information

Name	PICK1
Synonyms	PRKCABP
Function	Probable adapter protein that bind to and organize the subcellular localization of a variety of membrane proteins containing some PDZ recognition sequence. Involved in the clustering of various receptors, possibly by acting at the receptor internalization level. Plays a role in synaptic plasticity by regulating the trafficking and internalization of AMPA receptors. May be regulated upon PRKCA activation. May regulate ASIC1/ASIC3 channel. Regulates actin polymerization by inhibiting the actin-nucleating activity of the Arp2/3 complex; the function is competitive with nucleation promoting factors and is linked to neuronal morphology regulation and AMPA receptor (AMPA) endocytosis. Via interaction with the Arp2/3 complex involved in regulation of synaptic plasticity of excitatory synapses and required for spine shrinkage during long-term depression (LTD). Involved in regulation of

astrocyte morphology, antagonistic to Arp2/3 complex activator WASL/N-WASP function.

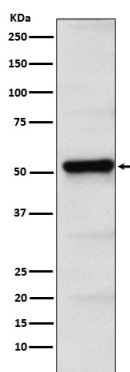
Cellular Location

Cytoplasm, perinuclear region {ECO:0000250|UniProtKB:Q9EP80}. Membrane {ECO:0000250|UniProtKB:Q9EP80}; Peripheral membrane protein {ECO:0000250|UniProtKB:Q9EP80}. Membrane {ECO:0000250|UniProtKB:Q62083}; Lipid-anchor {ECO:0000250|UniProtKB:Q62083}. Postsynaptic density {ECO:0000250|UniProtKB:Q9EP80}. Synapse, synaptosome {ECO:0000250|UniProtKB:Q9EP80}. Cytoplasm, cytoskeleton {ECO:0000250|UniProtKB:Q9EP80}. Note=Also membrane-associated, present at excitatory synapses. {ECO:0000250|UniProtKB:Q9EP80}

Tissue Location

Ubiquitous.

Images



Western blot analysis of PICK1 expression in HeLa cell lysate.

Please note: All products are 'FOR RESEARCH USE ONLY. NOT FOR USE IN DIAGNOSTIC OR THERAPEUTIC PROCEDURES'.