

Zyxin Antibody

Rabbit mAb

Catalog # AP91889

Product Information

Application	WB, IHC, IF, FC, ICC, IP, IHF
Primary Accession	Q15942
Reactivity	Human, Mouse
Clonality	Monoclonal
Other Names	ESP2; HED2; ZYX; Zyxin2;
Isotype	Rabbit IgG
Host	Rabbit
Calculated MW	61277

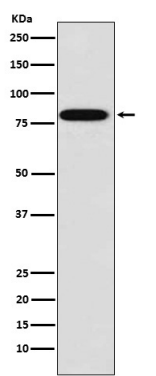
Additional Information

Dilution	WB 1:1000~1:5000 IHC 1:50~1:200 ICC/IF 1:50~1:200 IP 1:50 FC 1:500
Purification	Affinity-chromatography
Immunogen	A synthesized peptide derived from human Zyxin
Description	Zyxin binds alpha-actinin and the CRP proteins and is implicated in the regulation and modulation of actin filaments organization, cell adhesion, cell motility, mitosis, and signal transduction. Zyxin may shuttle between focal adhesion plaques and the nucleus. It has been suggested that zyxin is involved in gene transcription by its association with transcription factors in the nucleus.
Storage Condition and Buffer	Rabbit IgG in phosphate buffered saline , pH 7.4, 150mM NaCl, 0.02% sodium azide and 50% glycerol. Store at +4°C short term. Store at -20°C long term. Avoid freeze / thaw cycle.

Protein Information

Name	ZYX
Function	Adhesion plaque protein. Binds alpha-actinin and the CRP protein. Important for targeting TES and ENA/VASP family members to focal adhesions and for the formation of actin-rich structures. May be a component of a signal transduction pathway that mediates adhesion- stimulated changes in gene expression (By similarity).
Cellular Location	Cytoplasm. Cytoplasm, cytoskeleton. Nucleus. Cell junction, focal adhesion. Note=Associates with the actin cytoskeleton near the adhesion plaques. Enters the nucleus in the presence of HESX1

Images



Western blot analysis of Zyxin expression in MCF7 cell lysate.

Please note: All products are 'FOR RESEARCH USE ONLY. NOT FOR USE IN DIAGNOSTIC OR THERAPEUTIC PROCEDURES'.