

Cdx1 Antibody

Rabbit mAb

Catalog # AP91904

Product Information

Application	WB, IF, ICC
Primary Accession	P47902
Reactivity	Human
Clonality	Monoclonal
Other Names	CDX1; Homeobox protein CDX 1;
Isotype	Rabbit IgG
Host	Rabbit
Calculated MW	28138

Additional Information

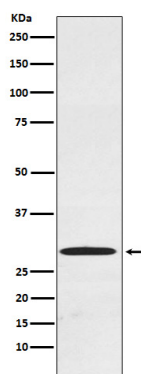
Dilution	WB 1:500~1:1000 ICC/IF 1:50~1:200
Purification	Affinity-chromatography
Immunogen	A synthesized peptide derived from human Cdx1
Description	Could play a role in the terminal differentiation of the intestine.
Storage Condition and Buffer	Rabbit IgG in phosphate buffered saline , pH 7.4, 150mM NaCl, 0.02% sodium azide and 50% glycerol. Store at +4°C short term. Store at -20°C long term. Avoid freeze / thaw cycle.

Protein Information

Name	CDX1
Function	Plays a role in transcriptional regulation (PubMed: 24623306). Involved in activated KRAS-mediated transcriptional activation of PRKD1 in colorectal cancer (CRC) cells (PubMed: 24623306). Binds to the PRKD1 promoter in colorectal cancer (CRC) cells (PubMed: 24623306). Could play a role in the terminal differentiation of the intestine. Binds preferentially to methylated DNA (PubMed: 28473536).
Cellular Location	Nucleus.
Tissue Location	Intestinal epithelium.

Images

Western blot analysis of Cdx1 expression in Caco-2 cell lysate.



Please note: All products are 'FOR RESEARCH USE ONLY. NOT FOR USE IN DIAGNOSTIC OR THERAPEUTIC PROCEDURES'.