

# Galectin 8 Antibody

Rabbit mAb

Catalog # AP91905

## Product Information

<b>Application</b>	WB, IHC, IF, FC, ICC, IP, IHF
<b>Primary Accession</b>	<a href="#">O00214</a>
<b>Reactivity</b>	Human
<b>Clonality</b>	Monoclonal
<b>Other Names</b>	LGALS8; Galectin-8g; Galectin-8; Po66-CBP; PCTA-1; Gal-8; Galectin 8; PCTA1;
<b>Isotype</b>	Rabbit IgG
<b>Host</b>	Rabbit
<b>Calculated MW</b>	35808

## Additional Information

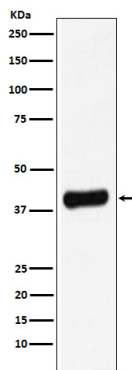
<b>Dilution</b>	WB 1:500~1:2000 IHC 1:50~1:200 ICC/IF 1:50~1:200 IP 1:50 FC 1:50
<b>Purification</b>	Affinity-chromatography
<b>Immunogen</b>	A synthesized peptide derived from human Galectin 8
<b>Description</b>	Beta-galactoside-binding lectin that acts as a sensor of membrane damage caused by infection and restricts the proliferation of infecting pathogens by targeting them for autophagy.
<b>Storage Condition and Buffer</b>	Rabbit IgG in phosphate buffered saline , pH 7.4, 150mM NaCl, 0.02% sodium azide and 50% glycerol. Store at +4°C short term. Store at -20°C long term. Avoid freeze / thaw cycle.

## Protein Information

<b>Name</b>	LGALS8 ( <a href="#">HGNC:6569</a> )
<b>Function</b>	Beta-galactoside-binding lectin that acts as a sensor of membrane damage caused by infection and restricts the proliferation of infecting pathogens by targeting them for autophagy (PubMed: <a href="#">22246324</a> , PubMed: <a href="#">28077878</a> ). Detects membrane rupture by binding beta-galactoside ligands located on the luminal side of the endosome membrane; these ligands becoming exposed to the cytoplasm following rupture (PubMed: <a href="#">22246324</a> , PubMed: <a href="#">28077878</a> ). Restricts infection by initiating autophagy via interaction with CALCOCO2/NDP52 (PubMed: <a href="#">22246324</a> , PubMed: <a href="#">28077878</a> ). Required to restrict infection of bacterial invasion such as S.typhimurium (PubMed: <a href="#">22246324</a> ). Also required to restrict infection of Picornaviridae viruses (PubMed: <a href="#">28077878</a> ). Has a marked preference for 3'-O-sialylated and 3'-O-sulfated glycans (PubMed: <a href="#">21288902</a> ).
<b>Cellular Location</b>	Cytoplasmic vesicle. Cytoplasm, cytosol
<b>Tissue Location</b>	Ubiquitous. Selective expression by prostate carcinomas versus normal

## Images

---



Western blot analysis of Galectin 8 expression in LNCaP cell lysate.

Please note: All products are 'FOR RESEARCH USE ONLY. NOT FOR USE IN DIAGNOSTIC OR THERAPEUTIC PROCEDURES'.