

Cathepsin S Antibody

Rabbit mAb

Catalog # AP91909

Product Information

Application	WB, IHC, IF, ICC, IHF
Primary Accession	P25774
Reactivity	Human
Clonality	Monoclonal
Other Names	CTSS; Cathepsin S; Cat-s; CATS;
Isotype	Rabbit IgG
Host	Rabbit
Calculated MW	37496

Additional Information

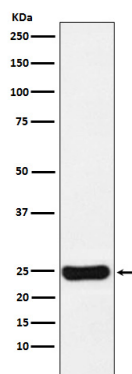
Dilution	WB 1:500~1:2000 IHC 1:50~1:200 ICC/IF 1:50~1:200
Purification	Affinity-chromatography
Immunogen	A synthesized peptide derived from human Cathepsin S
Description	Thiol protease. Key protease responsible for the removal of the invariant chain from MHC class II molecules. The bond-specificity of this proteinase is in part similar to the specificities of cathepsin L and cathepsin N.
Storage Condition and Buffer	Rabbit IgG in phosphate buffered saline , pH 7.4, 150mM NaCl, 0.02% sodium azide and 50% glycerol. Store at +4°C short term. Store at -20°C long term. Avoid freeze / thaw cycle.

Protein Information

Name	CTSS
Function	Thiol protease. Key protease responsible for the removal of the invariant chain from MHC class II molecules and MHC class II antigen presentation (PubMed: 30612035). The bond-specificity of this proteinase is in part similar to the specificities of cathepsin L.
Cellular Location	Lysosome. Secreted. Cytoplasmic vesicle, phagosome

Images

Western blot analysis of Cathepsin S expression in U87-MG cell lysate.



Please note: All products are 'FOR RESEARCH USE ONLY. NOT FOR USE IN DIAGNOSTIC OR THERAPEUTIC PROCEDURES'.