

Tropomyosin 1 Antibody

Rabbit mAb

Catalog # AP91910

Product Information

Application	WB, IHC, IF, FC, ICC, IP, IHF
Primary Accession	P09493
Reactivity	Rat, Human, Mouse
Clonality	Monoclonal
Other Names	CMH3; TMSA; CMD1Y; C15orf13; HTM-alpha;
Isotype	Rabbit IgG
Host	Rabbit
Calculated MW	32709

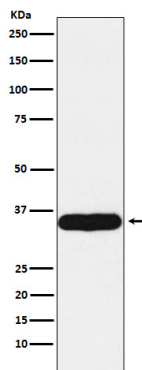
Additional Information

Dilution	WB 1:500~1:2000 IHC 1:50~1:200 ICC/IF 1:50~1:200 IP 1:50 FC 1:50
Purification	Affinity-chromatography
Immunogen	A synthesized peptide derived from human Tropomyosin 1
Description	Binds to actin filaments in muscle and non-muscle cells. Plays a central role, in association with the troponin complex, in the calcium dependent regulation of vertebrate striated muscle contraction.
Storage Condition and Buffer	Rabbit IgG in phosphate buffered saline , pH 7.4, 150mM NaCl, 0.02% sodium azide and 50% glycerol. Store at +4°C short term. Store at -20°C long term. Avoid freeze / thaw cycle.

Protein Information

Name	TPM1
Synonyms	C15orf13, TMSA
Function	Binds to actin filaments in muscle and non-muscle cells (PubMed: 23170982). Plays a central role, in association with the troponin complex, in the calcium dependent regulation of vertebrate striated muscle contraction (PubMed: 23170982). Smooth muscle contraction is regulated by interaction with caldesmon. In non-muscle cells is implicated in stabilizing cytoskeleton actin filaments.
Cellular Location	Cytoplasm, cytoskeleton {ECO:0000250 UniProtKB:P04692}. Note=Associates with F-actin stress fibers. {ECO:0000250 UniProtKB:P04692}
Tissue Location	Detected in primary breast cancer tissues but undetectable in normal breast tissues in Sudanese patients. Isoform 1 is expressed in adult and fetal skeletal muscle and cardiac tissues, with higher expression levels in the cardiac tissues. Isoform 10 is expressed in adult and fetal cardiac tissues, but not in

Images



Western blot analysis of Tropomyosin 1 expression in Human heart lysate.

Please note: All products are 'FOR RESEARCH USE ONLY. NOT FOR USE IN DIAGNOSTIC OR THERAPEUTIC PROCEDURES'.