

# Carbonic Anhydrase 1 Antibody

Rabbit mAb

Catalog # AP91913

## Product Information

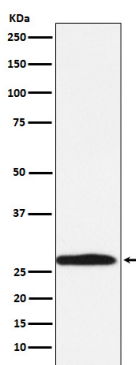
<b>Application</b>	WB, IHC, IF, ICC, IHF
<b>Primary Accession</b>	<a href="#">P00915</a>
<b>Reactivity</b>	Rat, Human, Mouse, Zebrafish
<b>Clonality</b>	Monoclonal
<b>Other Names</b>	CA-I; Carbonic anhydrase B; CAB; Car1;
<b>Isotype</b>	Rabbit IgG
<b>Host</b>	Rabbit
<b>Calculated MW</b>	29 KDa

## Additional Information

<b>Dilution</b>	WB 1:1000~1:5000 IHC 1:50~1:200 ICC/IF 1:100~1:500
<b>Purification</b>	Affinity-chromatography
<b>Immunogen</b>	A synthesized peptide derived from human Carbonic Anhydrase 1
<b>Description</b>	Reversible hydration of carbon dioxide. Can hydrates cyanamide to urea.
<b>Storage Condition and Buffer</b>	Rabbit IgG in phosphate buffered saline , pH 7.4, 150mM NaCl, 0.02% sodium azide and 50% glycerol. Store at +4°C short term. Store at -20°C long term. Avoid freeze / thaw cycle.

## Protein Information

## Images



Western blot analysis of Carbonic Anhydrase 1 expression in K562 cell lysate.