

# MYH11 Antibody

Rabbit mAb

Catalog # AP91919

## Product Information

---

<b>Application</b>	WB, IHC
<b>Primary Accession</b>	<a href="#">P35749</a>
<b>Reactivity</b>	Human, Mouse
<b>Clonality</b>	Monoclonal
<b>Other Names</b>	AAT4; FAA4; MYH11; SM1; SM2; SMHC; SMMHC;
<b>Isotype</b>	Rabbit IgG
<b>Host</b>	Rabbit
<b>Calculated MW</b>	227339

## Additional Information

---

<b>Dilution</b>	WB 1:1000~1:5000 IHC 1:50~1:200
<b>Purification</b>	Affinity-chromatography
<b>Immunogen</b>	A synthesized peptide derived from human Myosin, smooth muscle heavy chain 1 and 2
<b>Description</b>	Muscle contraction.
<b>Storage Condition and Buffer</b>	Rabbit IgG in phosphate buffered saline , pH 7.4, 150mM NaCl, 0.02% sodium azide and 50% glycerol. Store at +4°C short term. Store at -20°C long term. Avoid freeze / thaw cycle.

## Protein Information

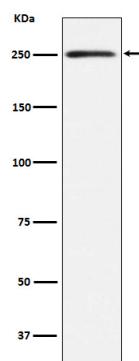
---

<b>Name</b>	MYH11
<b>Synonyms</b>	KIAA0866
<b>Function</b>	Muscle contraction.
<b>Cellular Location</b>	Melanosome. Note=Identified by mass spectrometry in melanosome fractions from stage I to stage IV. Thick filaments of the myofibrils
<b>Tissue Location</b>	Smooth muscle; expressed in the umbilical artery, bladder, esophagus and trachea. Isoform 1 is mostly found in slowly contracting tonic muscles.

## Images

---

Western blot analysis of Myosin, smooth muscle heavy chain 1 and 2 expression in Human bladder lysate.



Please note: All products are 'FOR RESEARCH USE ONLY. NOT FOR USE IN DIAGNOSTIC OR THERAPEUTIC PROCEDURES'.