

IL13 receptor alpha 1 Antibody

Rabbit mAb

Catalog # AP91922

Product Information

Application	WB
Primary Accession	P78552
Reactivity	Human
Clonality	Monoclonal
Other Names	CD213a1; CT19; IL13R; IL13RA; IL13ra1; Interleukin 13 receptor alpha 1; NR4;
Isotype	Rabbit IgG
Host	Rabbit
Calculated MW	48760

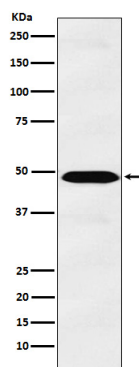
Additional Information

Dilution	WB 1:500~1:2000
Purification	Affinity-chromatography
Immunogen	A synthesized peptide derived from human IL13 receptor alpha 1
Description	Binds with low affinity to interleukin-13 (IL13). Together with IL4RA can form a functional receptor for IL13. Also serves as an alternate accessory protein to the common cytokine receptor gamma chain for interleukin-4 (IL4) signaling, but cannot replace the function of IL2RG in allowing enhanced interleukin-2 (IL2) binding activity.
Storage Condition and Buffer	Rabbit IgG in phosphate buffered saline , pH 7.4, 150mM NaCl, 0.02% sodium azide and 50% glycerol. Store at +4°C short term. Store at -20°C long term. Avoid freeze / thaw cycle.

Protein Information

Name	IL13RA1
Synonyms	IL13R, IL13RA
Function	Binds with low affinity to interleukin-13 (IL13). Together with IL4RA can form a functional receptor for IL13. Also serves as an alternate accessory protein to the common cytokine receptor gamma chain for interleukin-4 (IL4) signaling, but cannot replace the function of IL2RG in allowing enhanced interleukin-2 (IL2) binding activity.
Cellular Location	Membrane; Single-pass type I membrane protein.
Tissue Location	Ubiquitous. Highest levels in heart, liver, skeletal muscle and ovary; lowest levels in brain, lung and kidney Also found in B-cells, T-cells and endothelial cells

Images



Western blot analysis of IL13 receptor alpha 1 expression in A549 cell lysate.

Please note: All products are 'FOR RESEARCH USE ONLY. NOT FOR USE IN DIAGNOSTIC OR THERAPEUTIC PROCEDURES'.