

Human Kappa Chain Antibody

Rabbit mAb

Catalog # AP91924

Product Information

Application	WB, IHC, IF, ICC, IHF
Primary Accession	P01834
Reactivity	Human
Clonality	Monoclonal
Other Names	HCAK1; Ig kappa chain C region; IGKC; IMMUNOGLOBULIN InV; Km;
Isotype	Rabbit IgG
Host	Rabbit
Calculated MW	11765

Additional Information

Dilution	WB 1:500~1:2000 IHC 1:50~1:200 ICC/IF 1:50~1:200
Purification	Affinity-chromatography
Immunogen	A synthesized peptide derived from human Human Kappa Chain
Description	Immunoglobulins belong to a group of related glyco proteins which make up 20% of serum proteins. Antigens and immunoglobulins react to confer immunity to individuals. Immunoglobulins have similar structures of two identical heavy chains and two identical light chains.
Storage Condition and Buffer	Rabbit IgG in phosphate buffered saline , pH 7.4, 150mM NaCl, 0.02% sodium azide and 50% glycerol. Store at +4°C short term. Store at -20°C long term. Avoid freeze / thaw cycle.

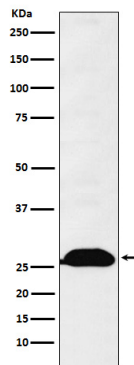
Protein Information

Name	IGKC {ECO:0000303 PubMed:11549845, ECO:0000303 Ref.13}
Function	Constant region of immunoglobulin light chains. Immunoglobulins, also known as antibodies, are membrane-bound or secreted glycoproteins produced by B lymphocytes. In the recognition phase of humoral immunity, the membrane-bound immunoglobulins serve as receptors which, upon binding of a specific antigen, trigger the clonal expansion and differentiation of B lymphocytes into immunoglobulins- secreting plasma cells. Secreted immunoglobulins mediate the effector phase of humoral immunity, which results in the elimination of bound antigens (PubMed: 20176268 , PubMed: 22158414). The antigen binding site is formed by the variable domain of one heavy chain, together with that of its associated light chain. Thus, each immunoglobulin has two antigen binding sites with remarkable affinity for a particular antigen. The variable domains are assembled by a process called V-(D)-J rearrangement and can then be subjected to somatic hypermutations which, after exposure to antigen and selection, allow affinity maturation for a particular antigen (PubMed: 17576170 , PubMed: 20176268).

Cellular Location

Secreted. Cell membrane

Images



Western blot analysis of Human Kappa Chain expression in Human fetal spleen lysate.

Please note: All products are 'FOR RESEARCH USE ONLY. NOT FOR USE IN DIAGNOSTIC OR THERAPEUTIC PROCEDURES'.