

IL23 Antibody

Rabbit mAb

Catalog # AP91926

Product Information

Application	WB
Primary Accession	Q9NPF7
Reactivity	Human
Clonality	Monoclonal
Other Names	IL 23A; IL 23p19; IL12B; IL23; IL23a; IL23P19; P19; SGRF;
Isotype	Rabbit IgG
Host	Rabbit
Calculated MW	20730

Additional Information

Dilution	WB 1:500~1:1000
Purification	Affinity-chromatography
Immunogen	A synthesized peptide derived from human IL23
Description	Associates with IL12B to form the IL-23 interleukin, an heterodimeric cytokine which functions in innate and adaptive immunity. IL-23 may constitute with IL-17 an acute response to infection in peripheral tissues. IL-23 binds to an heterodimeric receptor complex composed of IL12RB1 and IL23R, activates the Jak-Stat signaling cascade, stimulates memory rather than naive T-cells and promotes production of proinflammatory cytokines.
Storage Condition and Buffer	Rabbit IgG in phosphate buffered saline , pH 7.4, 150mM NaCl, 0.02% sodium azide and 50% glycerol. Store at +4°C short term. Store at -20°C long term. Avoid freeze / thaw cycle.

Protein Information

Name	IL23A
Synonyms	SGRF
Function	Associates with IL12B to form the pro-inflammatory cytokine IL-23 that plays different roles in innate and adaptive immunity (PubMed: 11114383). Released by antigen-presenting cells such as dendritic cells or macrophages, binds to a heterodimeric receptor complex composed of IL12RB1 and IL23R to activate JAK2 and TYK2 which then phosphorylate the receptor to form a docking site leading to the phosphorylation of STAT3 and STAT4 (PubMed: 29287995 , PubMed: 32474165 , PubMed: 33606986). This process leads to activation of several pathways including p38 MAPK or NF-kappa-B and promotes the production of pro- inflammatory cytokines such as interleukin-17A/IL17A (PubMed: 12023369). In turn, participates in the early and effective intracellular bacterial clearance (PubMed: 32474165). Promotes the expansion

and survival of T-helper 17 cells, a CD4-positive helper T-cell subset that produces IL-17, as well as other IL-17-producing cells (PubMed:[17676044](#)).

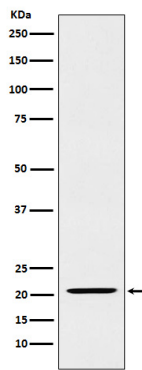
Cellular Location

Secreted. Note=Secreted upon association with IL12B

Tissue Location

Secreted by activated dendritic and phagocytic cells and keratinocytes. Also expressed by dermal Langerhans cells (at protein level).

Images



Western blot analysis of IL23 expression in Raji cell lysate.

Please note: All products are 'FOR RESEARCH USE ONLY. NOT FOR USE IN DIAGNOSTIC OR THERAPEUTIC PROCEDURES'.