

BDKRB2 Antibody

Rabbit mAb

Catalog # AP91928

Product Information

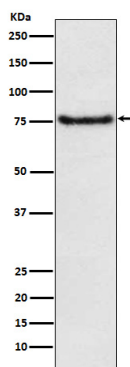
Application	WB, IP
Primary Accession	P30411
Reactivity	Human, Mouse
Clonality	Monoclonal
Other Names	B2BKR; B2BRA; B2R; BDKRB2; BK2 receptor; BK2R; BKR2; BR B2; BRB2; Kinin B2;
Isotype	Rabbit IgG
Host	Rabbit
Calculated MW	78 KDa

Additional Information

Dilution	WB 1:500~1:2000 IP 1:50
Purification	Affinity-chromatography
Immunogen	A synthesized peptide derived from human BDKRB2
Description	Receptor for bradykinin. It is associated with G proteins that activate a phosphatidylinositol-calcium second messenger system.
Storage Condition and Buffer	Rabbit IgG in phosphate buffered saline , pH 7.4, 150mM NaCl, 0.02% sodium azide and 50% glycerol. Store at +4°C short term. Store at -20°C long term. Avoid freeze / thaw cycle.

Protein Information

Images



Western blot analysis of BDKRB2 expression in JAR cell lysate.

Please note: All products are 'FOR RESEARCH USE ONLY. NOT FOR USE IN DIAGNOSTIC OR THERAPEUTIC PROCEDURES'.