

p60 CAF1 Antibody

Rabbit mAb

Catalog # AP91931

Product Information

Application	WB, IHC, IF, FC, ICC, IP, IHF
Primary Accession	Q13112
Reactivity	Human
Clonality	Monoclonal
Other Names	CAF 1A; CAF IP60; CAF-1; CAF1; CAF1A; CAF1P60; CHAF1B; MPHOSPH7; MPP7;
Isotype	Rabbit IgG
Host	Rabbit
Calculated MW	61493

Additional Information

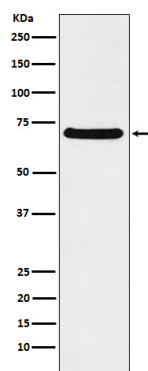
Dilution	WB 1:1000~1:5000 IHC 1:50~1:200 ICC/IF 1:50~1:200 IP 1:50 FC 1:100
Purification	Affinity-chromatography
Immunogen	A synthesized peptide derived from human p60 CAF1
Description	Complex that is thought to mediate chromatin assembly in DNA replication and DNA repair. Assembles histone octamers onto replicating DNA in vitro.
Storage Condition and Buffer	Rabbit IgG in phosphate buffered saline , pH 7.4, 150mM NaCl, 0.02% sodium azide and 50% glycerol. Store at +4°C short term. Store at -20°C long term. Avoid freeze / thaw cycle.

Protein Information

Name	CHAF1B (HGNC:1911)
Function	Acts as a component of the histone chaperone complex chromatin assembly factor 1 (CAF-1), which assembles histone octamers onto DNA during replication and repair. CAF-1 performs the first step of the nucleosome assembly process, bringing newly synthesized histones H3 and H4 to replicating DNA; histones H2A/H2B can bind to this chromatin precursor subsequent to DNA replication to complete the histone octamer.
Cellular Location	Nucleus. Cytoplasm. Note=DNA replication foci. Cytoplasmic in M phase

Images

Western blot analysis of p60 CAF1 expression in Caco2 cell lysate.



Please note: All products are 'FOR RESEARCH USE ONLY. NOT FOR USE IN DIAGNOSTIC OR THERAPEUTIC PROCEDURES'.