

MST1 Antibody

Rabbit mAb

Catalog # AP91935

Product Information

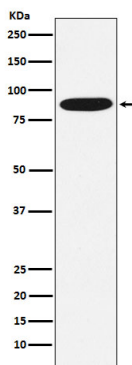
Application	WB, IHC, FC
Primary Accession	P26927
Reactivity	Rat, Human, Mouse
Clonality	Monoclonal
Other Names	HGFL; MSP; MST1; NF15S2;
Isotype	Rabbit IgG
Host	Rabbit
Calculated MW	85 KDa

Additional Information

Dilution	WB 1:500~1:2000 IHC 1:50~1:200 FC 1:50
Purification	Affinity-chromatography
Immunogen	A synthesized peptide derived from human MST1
Description	Probably has no proteolytic activity, since crucial characteristic of serine proteases catalytic sites are not conserved.
Storage Condition and Buffer	Rabbit IgG in phosphate buffered saline , pH 7.4, 150mM NaCl, 0.02% sodium azide and 50% glycerol. Store at +4°C short term. Store at -20°C long term. Avoid freeze / thaw cycle.

Protein Information

Images



Western blot analysis of MST1 expression in HepG2 cell lysate.