

Napsin A Antibody

Rabbit mAb

Catalog # AP91936

Product Information

Application	WB, IHC, IP
Primary Accession	O96009
Reactivity	Human
Clonality	Monoclonal
Other Names	ASP4; KAP; Kdap; NAP1; NAPA; Napsa; Napsin-1; Napsin-A; Pronapsin A; SNAPA; TA01/TA02;
Isotype	Rabbit IgG
Host	Rabbit
Calculated MW	45387

Additional Information

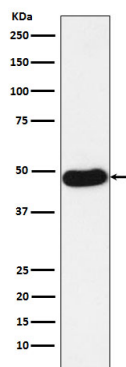
Dilution	WB 1:1000~1:5000 IHC 1:50~1:200 IP 1:50
Purification	Affinity-chromatography
Immunogen	A synthesized peptide derived from human NAPSIN A
Description	May be involved in processing of pneumocyte surfactant precursors.
Storage Condition and Buffer	Rabbit IgG in phosphate buffered saline , pH 7.4, 150mM NaCl, 0.02% sodium azide and 50% glycerol. Store at +4°C short term. Store at -20°C long term. Avoid freeze / thaw cycle.

Protein Information

Name	NAPSA
Synonyms	NAP1, NAPA
Function	May be involved in processing of pneumocyte surfactant precursors.
Cellular Location	Secreted.
Tissue Location	Expressed predominantly in adult lung (type II pneumocytes) and kidney and in fetal lung. Low levels in adult spleen and very low levels in peripheral blood leukocytes

Images

Western blot analysis of NAPSIN A expression in Human lung adenocarcinoma lysate.



Please note: All products are 'FOR RESEARCH USE ONLY. NOT FOR USE IN DIAGNOSTIC OR THERAPEUTIC PROCEDURES'.