

ATOH1 Antibody

Rabbit mAb

Catalog # AP91940

Product Information

Application	WB
Primary Accession	Q92858
Reactivity	Rat, Human, Mouse
Clonality	Monoclonal
Other Names	ATH1; ATOH1; bHLHa14; hATH1; MATH1;
Isotype	Rabbit IgG
Host	Rabbit
Calculated MW	38160

Additional Information

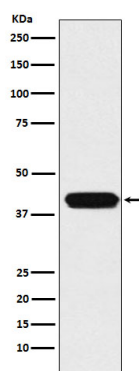
Dilution	WB 1:500~1:1000
Purification	Affinity-chromatography
Immunogen	A synthesized peptide derived from human MATH1/HATH1
Description	Activates E box-dependent transcription in collaboration with TCF3/E47, but the activity is completely antagonized by the negative regulator of neurogenesis HES1. May play a role in the differentiation of subsets of neural cells by activating E box-dependent transcription.
Storage Condition and Buffer	Rabbit IgG in phosphate buffered saline , pH 7.4, 150mM NaCl, 0.02% sodium azide and 50% glycerol. Store at +4°C short term. Store at -20°C long term. Avoid freeze / thaw cycle.

Protein Information

Name	ATOH1 (HGNC:797)
Synonyms	ATH1, BHLHA14
Function	Transcriptional regulator. Activates E box-dependent transcription in collaboration with TCF3/E47, but the activity is completely antagonized by the negative regulator of neurogenesis HES1. Plays a role in the differentiation of subsets of neural cells by activating E box-dependent transcription (By similarity).
Cellular Location	Nucleus.

Images

Western blot analysis of MATH1/HATH1 expression in



HepG2 cell lysate.

Please note: All products are 'FOR RESEARCH USE ONLY. NOT FOR USE IN DIAGNOSTIC OR THERAPEUTIC PROCEDURES'.