

COMT Antibody

Rabbit mAb

Catalog # AP91943

Product Information

Application	WB, IHC
Primary Accession	P21964
Reactivity	Rat, Human, Mouse
Clonality	Monoclonal
Other Names	Catechol O methyltransferase; COMT;
Isotype	Rabbit IgG
Host	Rabbit
Calculated MW	30037

Additional Information

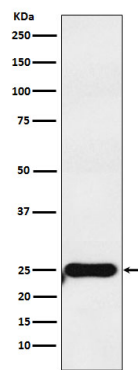
Dilution	WB 1:500~1:2000 IHC 1:50~1:200
Purification	Affinity-chromatography
Immunogen	A synthesized peptide derived from human COMT
Description	Catalyzes the O-methylation, and thereby the inactivation, of catecholamine neurotransmitters and catechol hormones. Also shortens the biological half-lives of certain neuroactive drugs, like L-DOPA, alpha-methyl DOPA and isoproterenol.
Storage Condition and Buffer	Rabbit IgG in phosphate buffered saline , pH 7.4, 150mM NaCl, 0.02% sodium azide and 50% glycerol. Store at +4°C short term. Store at -20°C long term. Avoid freeze / thaw cycle.

Protein Information

Name	COMT (HGNC:2228)
Function	Catalyzes the O-methylation, and thereby the inactivation, of catecholamine neurotransmitters and catechol hormones. Also shortens the biological half-lives of certain neuroactive drugs, like L-DOPA, alpha-methyl DOPA and isoproterenol.
Cellular Location	[Isoform Soluble]: Cytoplasm
Tissue Location	Brain, liver, placenta, lymphocytes and erythrocytes

Images

Western blot analysis of COMT expression in MOLT4 cell lysate.



Please note: All products are 'FOR RESEARCH USE ONLY. NOT FOR USE IN DIAGNOSTIC OR THERAPEUTIC PROCEDURES'.