

Glutathione Synthetase Antibody

Rabbit mAb

Catalog # AP91948

Product Information

| | |
|--------------------------|--|
| Application | WB, IHC, IF, FC, ICC, IHF |
| Primary Accession | P48637 |
| Reactivity | Rat, Human, Mouse |
| Clonality | Monoclonal |
| Other Names | Glutathione synthase; Glutathione synthetase; GSH S; GSH synthetase; GSH-S; GSHS; GSS; HEL-S-64p; HEL-S-88n; |
| Isotype | Rabbit IgG |
| Host | Rabbit |
| Calculated MW | 52385 |

Additional Information

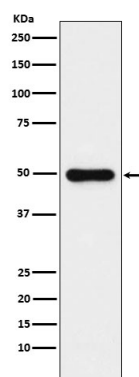
| | |
|-------------------------------------|---|
| Dilution | WB 1:500~1:2000 IHC 1:50~1:200 ICC/IF 1:50~1:200 FC 1:100 |
| Purification | Affinity-chromatography |
| Immunogen | A synthesized peptide derived from human Glutathione Synthetase |
| Description | Sulfur metabolism; glutathione biosynthesis; glutathione from L-cysteine and L-glutamate: step 2/2. |
| Storage Condition and Buffer | Rabbit IgG in phosphate buffered saline , pH 7.4, 150mM NaCl, 0.02% sodium azide and 50% glycerol. Store at +4°C short term. Store at -20°C long term. Avoid freeze / thaw cycle. |

Protein Information

| | |
|-----------------|--|
| Name | GSS (HGNC:4624) |
| Function | Catalyzes the production of glutathione from gamma- glutamylcysteine and glycine in an ATP-dependent manner (PubMed: 7646467 , PubMed: 9215686). Glutathione (gamma- glutamylcysteinylglycine, GSH) is the most abundant intracellular thiol in living aerobic cells and is required for numerous processes including the protection of cells against oxidative damage, amino acid transport, the detoxification of foreign compounds, the maintenance of protein sulfhydryl groups in a reduced state and acts as a cofactor for a number of enzymes (PubMed: 10369661). Participates in ophthalmate biosynthesis in hepatocytes (By similarity). |

Images

Western blot analysis of Glutathione Synthetase expression in HeLa cell lysate.



Please note: All products are 'FOR RESEARCH USE ONLY. NOT FOR USE IN DIAGNOSTIC OR THERAPEUTIC PROCEDURES'.