

CD35 Antibody

Rabbit mAb

Catalog # AP91949

Product Information

Application	WB, IHC, IF, ICC, IHF
Primary Accession	P17927
Reactivity	Human
Clonality	Monoclonal
Other Names	C3 binding protein; C3b/C4b receptor; C3BR; C4BR; CD35; CR1; KN;
Isotype	Rabbit IgG
Host	Rabbit
Calculated MW	223663

Additional Information

Dilution	WB 1:500~1:2000 IHC 1:50~1:200 ICC/IF 1:50~1:200
Purification	Affinity-chromatography
Immunogen	A synthesized peptide derived from human CD35
Description	Mediates cellular binding of particles and immune complexes that have activated complement.
Storage Condition and Buffer	Rabbit IgG in phosphate buffered saline , pH 7.4, 150mM NaCl, 0.02% sodium azide and 50% glycerol. Store at +4°C short term. Store at -20°C long term. Avoid freeze / thaw cycle.

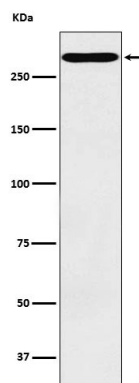
Protein Information

Name	CR1
Synonyms	C3BR
Function	Membrane immune adherence receptor that plays a critical role in the capture and clearance of complement-opsonized pathogens by erythrocytes and monocytes/macrophages (PubMed: 2963069). Mediates the binding by these cells of particles and immune complexes that have activated complement to eliminate them from the circulation (PubMed: 2963069). Also acts in the inhibition of spontaneous complement activation by impairing the formation and function of the alternative and classical pathway C3/C5 convertases, and by serving as a cofactor for the cleavage by factor I of C3b to iC3b, C3c and C3d,g, and of C4b to C4c and C4d (PubMed: 2972794 , PubMed: 8175757). Also plays a role in immune regulation by contributing, upon ligand binding, to the generation of regulatory T cells from activated helper T cells (PubMed: 25742728).
Cellular Location	Membrane; Single- pass type I membrane protein

Tissue Location

Present on erythrocytes, a subset of T cells, mature B cells, follicular dendritic cells, monocytes and granulocytes

Images



Western blot analysis of CD35 expression in TF1 cell lysate.

Please note: All products are 'FOR RESEARCH USE ONLY. NOT FOR USE IN DIAGNOSTIC OR THERAPEUTIC PROCEDURES'.