

# FKBP52 Antibody

Rabbit mAb

Catalog # AP91951

## Product Information

---

<b>Application</b>	WB, IHC, IF, FC, ICC, IHF
<b>Primary Accession</b>	<a href="#">Q02790</a>
<b>Reactivity</b>	Rat, Human, Mouse
<b>Clonality</b>	Monoclonal
<b>Other Names</b>	HBI; p52; Hsp56; FKBP51; FKBP52; FKBP59; PPIase;
<b>Isotype</b>	Rabbit IgG
<b>Host</b>	Rabbit
<b>Calculated MW</b>	51805

## Additional Information

---

<b>Dilution</b>	WB 1:500~1:2000 IHC 1:50~1:200 ICC/IF 1:50~1:200 FC 1:50
<b>Purification</b>	Affinity-chromatography
<b>Immunogen</b>	A synthesized peptide derived from human FKBP52
<b>Description</b>	Immunophilin protein with PPIase and co-chaperone activities (By similarity). Component of unliganded steroid receptors heterocomplexes through interaction with heat-shock protein 90 (HSP90).
<b>Storage Condition and Buffer</b>	Rabbit IgG in phosphate buffered saline , pH 7.4, 150mM NaCl, 0.02% sodium azide and 50% glycerol. Store at +4°C short term. Store at -20°C long term. Avoid freeze / thaw cycle.

## Protein Information

---

<b>Name</b>	FKBP4
<b>Synonyms</b>	FKBP52
<b>Function</b>	Immunophilin protein with PPIase and co-chaperone activities. Component of steroid receptors heterocomplexes through interaction with heat-shock protein 90 (HSP90). May play a role in the intracellular trafficking of heterooligomeric forms of steroid hormone receptors between cytoplasm and nuclear compartments. The isomerase activity controls neuronal growth cones via regulation of TRPC1 channel opening. Also acts as a regulator of microtubule dynamics by inhibiting MAPT/TAU ability to promote microtubule assembly. May have a protective role against oxidative stress in mitochondria.
<b>Cellular Location</b>	Cytoplasm, cytosol. Mitochondrion. Nucleus {ECO:0000250 UniProtKB:P30416}. Cytoplasm, cytoskeleton {ECO:0000250 UniProtKB:Q9QVC8}. Cell projection, axon {ECO:0000250 UniProtKB:Q9QVC8}. Note=Shuttles from mitochondria to nucleus; co-localizes in mitochondria with the glucocorticoid receptor

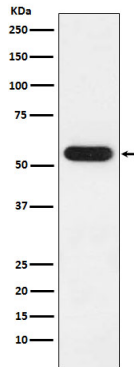
(PubMed:21730050). Colocalized with MAPT/TAU in the distal part of the primary cortical neurons (By similarity) {ECO:0000250|UniProtKB:Q9QVC8, ECO:0000269|PubMed:21730050}

**Tissue Location**

Widely expressed..

**Images**

---



Western blot analysis of FKBP52 expression in MCF7 cell lysate.

Please note: All products are 'FOR RESEARCH USE ONLY. NOT FOR USE IN DIAGNOSTIC OR THERAPEUTIC PROCEDURES'.