

# beta Defensin 1 Antibody

Rabbit mAb

Catalog # AP91963

## Product Information

---

<b>Application</b>	WB
<b>Primary Accession</b>	<a href="#">P60022</a>
<b>Reactivity</b>	Human
<b>Clonality</b>	Monoclonal
<b>Other Names</b>	BD1; beta 1; DEFB1; DEFB101; Defensin; Defensin beta 1; HBD1;
<b>Isotype</b>	Rabbit IgG
<b>Host</b>	Rabbit
<b>Calculated MW</b>	7420

## Additional Information

---

<b>Dilution</b>	WB 1:500~1:2000
<b>Purification</b>	Affinity-chromatography
<b>Immunogen</b>	A synthesized peptide derived from human beta Defensin 1
<b>Description</b>	Has bactericidal activity.
<b>Storage Condition and Buffer</b>	Rabbit IgG in phosphate buffered saline , pH 7.4, 150mM NaCl, 0.02% sodium azide and 50% glycerol. Store at +4°C short term. Store at -20°C long term. Avoid freeze / thaw cycle.

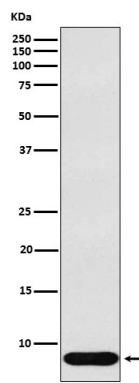
## Protein Information

---

<b>Name</b>	DEFB1
<b>Synonyms</b>	BD1, HBD1
<b>Function</b>	Has bactericidal activity. May act as a ligand for C-C chemokine receptor CCR6. Positively regulates the sperm motility and bactericidal activity in a CCR6-dependent manner. Binds to CCR6 and triggers Ca <sup>2+</sup> mobilization in the sperm which is important for its motility (PubMed: <a href="#">25122636</a> ).
<b>Cellular Location</b>	Secreted. Membrane. Note=Associates with tumor cell membrane-derived microvesicles (PubMed:23938203)
<b>Tissue Location</b>	Blood plasma. Sperm. Highly expressed in the lower head and midpiece of sperm. Significantly reduced levels found in the sperms of asthenozoospermia and leukocytospermia patients (at protein level).

## Images

---



Western blot analysis of beta Defensin 1 expression in Human recombinant beta Defensin 1 lysate.

Please note: All products are 'FOR RESEARCH USE ONLY. NOT FOR USE IN DIAGNOSTIC OR THERAPEUTIC PROCEDURES'.