

# SLC9A1 Antibody

Rabbit mAb

Catalog # AP91964

## Product Information

---

<b>Application</b>	WB
<b>Primary Accession</b>	<a href="#">P19634</a>
<b>Reactivity</b>	Human
<b>Clonality</b>	Monoclonal
<b>Other Names</b>	APNH; APNH1; NHE1; SLC9A1;
<b>Isotype</b>	Rabbit IgG
<b>Host</b>	Rabbit
<b>Calculated MW</b>	90763

## Additional Information

---

<b>Dilution</b>	WB 1:500~1:2000
<b>Purification</b>	Affinity-chromatography
<b>Immunogen</b>	A synthesized peptide derived from human Sodium / Hydrogen Exchanger 1
<b>Description</b>	Involved in pH regulation to eliminate acids generated by active metabolism or to counter adverse environmental conditions. Major proton extruding system driven by the inward sodium ion chemical gradient. Plays an important role in signal transduction.
<b>Storage Condition and Buffer</b>	Rabbit IgG in phosphate buffered saline , pH 7.4, 150mM NaCl, 0.02% sodium azide and 50% glycerol. Store at +4°C short term. Store at -20°C long term. Avoid freeze / thaw cycle.

## Protein Information

---

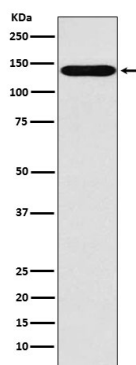
<b>Name</b>	SLC9A1 ( <a href="#">HGNC:11071</a> )
<b>Function</b>	Electroneutral Na(+) /H(+) antiporter that extrudes Na(+) in exchange for external protons driven by the inward sodium ion chemical gradient, protecting cells from acidification that occurs from metabolism (PubMed: <a href="#">11350981</a> , PubMed: <a href="#">11532004</a> , PubMed: <a href="#">14680478</a> , PubMed: <a href="#">15035633</a> , PubMed: <a href="#">15677483</a> , PubMed: <a href="#">17073455</a> , PubMed: <a href="#">17493937</a> , PubMed: <a href="#">22020933</a> , PubMed: <a href="#">27650500</a> , PubMed: <a href="#">32130622</a> , PubMed: <a href="#">7110335</a> , PubMed: <a href="#">7603840</a> ). Exchanges intracellular H(+) ions for extracellular Na(+) in 1:1 stoichiometry (By similarity). Plays a key role in maintaining intracellular pH neutral and cell volume, and thus is important for cell growth, proliferation, migration and survival (PubMed: <a href="#">12947095</a> , PubMed: <a href="#">15096511</a> , PubMed: <a href="#">22020933</a> , PubMed: <a href="#">8901634</a> ). In addition, can transport lithium Li(+) and also functions as a Na(+)/Li(+) antiporter (PubMed: <a href="#">7603840</a> ). SLC9A1 also functions in membrane anchoring and organization of scaffolding complexes that coordinate signaling inputs (PubMed: <a href="#">15096511</a> ).

**Cellular Location** Cell membrane; Multi-pass membrane protein. Basolateral cell membrane {ECO:0000250|UniProtKB:P48762}; Multi-pass membrane protein.  
Note=Localized basolaterally in every epithelial cell, except in the choroid plexus where SLC9A1 is expressed lumenally.

**Tissue Location** Kidney and intestine.

## Images

---



Western blot analysis of Sodium / Hydrogen Exchanger 1 expression in MOLT4 cell lysate.

Please note: All products are 'FOR RESEARCH USE ONLY. NOT FOR USE IN DIAGNOSTIC OR THERAPEUTIC PROCEDURES'.