

Loricrin Antibody

Rabbit mAb

Catalog # AP91970

Product Information

Application	WB, IHC
Primary Accession	P23490
Reactivity	Human
Clonality	Monoclonal
Other Names	LOR; Loricrin; LRN;

Isotype	Rabbit IgG
Host	Rabbit
Calculated MW	25761

Additional Information

Dilution	WB 1:1000~1:5000 IHC 1:50~1:200
Purification	Affinity-chromatography
Immunogen	A synthesized peptide derived from human Loricrin
Description	Major keratinocyte cell envelope protein.
Storage Condition and Buffer	Rabbit IgG in phosphate buffered saline , pH 7.4, 150mM NaCl, 0.02% sodium azide and 50% glycerol. Store at +4°C short term. Store at -20°C long term. Avoid freeze / thaw cycle.

Protein Information

Name	LORICRIN (HGNC:6663)
Synonyms	LOR, LRN
Function	Major keratinocyte cell envelope protein.
Cellular Location	Cytoplasm. Nucleus, nucleoplasm.

Images

Western blot analysis of Loricrin expression in Human skin cell lysate.

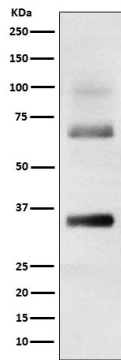


Image not found : 202311/AP91970-wb6.jpg

Fibulin-3 has anti-tumorigenic activities in cutaneous squamous cell carcinoma. -Journal of Investigative Dermatology

Please note: All products are 'FOR RESEARCH USE ONLY. NOT FOR USE IN DIAGNOSTIC OR THERAPEUTIC PROCEDURES'.