

# VAMP1 Antibody

Rabbit mAb

Catalog # AP91975

## Product Information

---

<b>Application</b>	WB, IHC, IF, ICC, IHF
<b>Primary Accession</b>	<a href="#">P23763</a>
<b>Reactivity</b>	Rat, Human, Mouse
<b>Clonality</b>	Monoclonal
<b>Other Names</b>	SYB1; Synaptobrevin 1; Vamp1;
<b>Isotype</b>	Rabbit IgG
<b>Host</b>	Rabbit
<b>Calculated MW</b>	12902

## Additional Information

---

<b>Dilution</b>	WB 1:500~1:2000 IHC 1:50~1:200 ICC/IF 1:50~1:200
<b>Purification</b>	Affinity-chromatography
<b>Immunogen</b>	A synthesized peptide derived from human VAMP1
<b>Description</b>	Involved in the targeting and/or fusion of transport vesicles to their target membrane.
<b>Storage Condition and Buffer</b>	Rabbit IgG in phosphate buffered saline , pH 7.4, 150mM NaCl, 0.02% sodium azide and 50% glycerol. Store at +4°C short term. Store at -20°C long term. Avoid freeze / thaw cycle.

## Protein Information

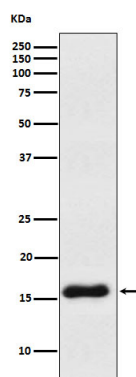
---

<b>Name</b>	VAMP1
<b>Synonyms</b>	SYB1
<b>Function</b>	Involved in the targeting and/or fusion of transport vesicles to their target membrane.
<b>Cellular Location</b>	[Isoform 1]: Cytoplasmic vesicle, secretory vesicle, synaptic vesicle membrane; Single-pass type IV membrane protein. Synapse, synaptosome [Isoform 3]: Mitochondrion outer membrane; Single-pass type IV membrane protein
<b>Tissue Location</b>	Nervous system, skeletal muscle and adipose tissue.

## Images

---

Western blot analysis of VAMP1 expression in Human cerebellum lysate.



Please note: All products are 'FOR RESEARCH USE ONLY. NOT FOR USE IN DIAGNOSTIC OR THERAPEUTIC PROCEDURES'.