

CPS1 Antibody

Rabbit mAb

Catalog # AP91981

Product Information

Application	WB, IHC, IF, ICC, IP, IHF
Primary Accession	P31327
Reactivity	Rat, Human, Mouse
Clonality	Monoclonal
Other Names	Cps1; CPSase 1; CPSase I; CPSASE1; MS738;
Isotype	Rabbit IgG
Host	Rabbit
Calculated MW	164939

Additional Information

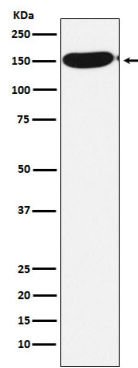
Dilution	WB 1:500~1:2000 IHC 1:50~1:200 ICC/IF 1:50~1:200 IP 1:50
Purification	Affinity-chromatography
Immunogen	A synthesized peptide derived from human CPS1
Description	Involved in the urea cycle of ureotelic animals where the enzyme plays an important role in removing excess ammonia from the cell.
Storage Condition and Buffer	Rabbit IgG in phosphate buffered saline , pH 7.4, 150mM NaCl, 0.02% sodium azide and 50% glycerol. Store at +4°C short term. Store at -20°C long term. Avoid freeze / thaw cycle.

Protein Information

Name	CPS1
Function	Involved in the urea cycle of ureotelic animals where the enzyme plays an important role in removing excess ammonia from the cell.
Cellular Location	Mitochondrion. Nucleus, nucleolus. Cell membrane {ECO:0000250 UniProtKB:Q8C196}; Peripheral membrane protein; Extracellular side {ECO:0000250 UniProtKB:Q8C196} Note=Localizes to the cell surface of hepatocytes {ECO:0000250 UniProtKB:Q8C196}
Tissue Location	Primarily in the liver and small intestine.

Images

Western blot analysis of CPS1 expression in HeLa cell lysate.



Please note: All products are 'FOR RESEARCH USE ONLY. NOT FOR USE IN DIAGNOSTIC OR THERAPEUTIC PROCEDURES'.