

FHL1 Antibody

Rabbit mAb

Catalog # AP91983

Product Information

Application	WB, IHC, IP
Primary Accession	Q13642
Reactivity	Rat, Human, Mouse
Clonality	Monoclonal
Other Names	FHL1; FHL1A; FHL1B; FLH1A; RBMX1A; RBMX1B; SLIM1; SLIMMER; XMPMA;
Isotype	Rabbit IgG
Host	Rabbit
Calculated MW	36263

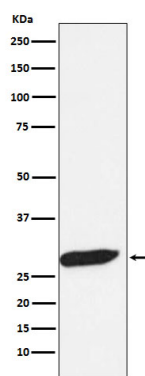
Additional Information

Dilution	WB 1:500~1:2000 IHC 1:50~1:200 IP 1:50
Purification	Affinity-chromatography
Immunogen	A synthesized peptide derived from human FHL1
Description	May have an involvement in muscle development or hypertrophy.
Storage Condition and Buffer	Rabbit IgG in phosphate buffered saline , pH 7.4, 150mM NaCl, 0.02% sodium azide and 50% glycerol. Store at +4°C short term. Store at -20°C long term. Avoid freeze / thaw cycle.

Protein Information

Name	FHL1
Synonyms	SLIM1
Function	May have an involvement in muscle development or hypertrophy.
Cellular Location	[Isoform 1]: Cytoplasm. [Isoform 2]: Nucleus. Cytoplasm, cytosol. Note=Predominantly nuclear in myoblasts but is cytosolic in differentiated myotubes
Tissue Location	Isoform 1 is highly expressed in skeletal muscle and to a lesser extent in heart, placenta, ovary, prostate, testis, small intestine, colon and spleen. Expression is barely detectable in brain, lung, liver, kidney, pancreas, thymus and peripheral blood leukocytes. Isoform 2 is expressed in brain, skeletal muscle and to a lesser extent in heart, colon, prostate and small intestine. Isoform 3 is expressed in testis, heart and skeletal muscle

Images



Western blot analysis of FHL1 expression in Human fetal muscle lysate.

Please note: All products are 'FOR RESEARCH USE ONLY. NOT FOR USE IN DIAGNOSTIC OR THERAPEUTIC PROCEDURES'.