

NUP153 Antibody

Rabbit mAb

Catalog # AP91987

Product Information

Application	WB, IF, FC, ICC
Primary Accession	P49790
Reactivity	Human
Clonality	Monoclonal
Other Names	HNUP153; Nup153;

Isotype	Rabbit IgG
Host	Rabbit
Calculated MW	153938

Additional Information

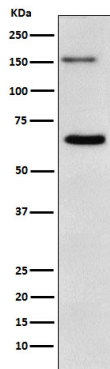
Dilution	WB 1:500~1:2000 ICC/IF 1:50~1:200 FC 1:50
Purification	Affinity-chromatography
Immunogen	A synthesized peptide derived from human Nup153
Description	Possible DNA-binding subunit of the nuclear pore complex (NPC). The repeat-containing domain may be involved in anchoring components of the pore complex to the pore membrane.
Storage Condition and Buffer	Rabbit IgG in phosphate buffered saline , pH 7.4, 150mM NaCl, 0.02% sodium azide and 50% glycerol. Store at +4°C short term. Store at -20°C long term. Avoid freeze / thaw cycle.

Protein Information

Name	NUP153
Function	Component of the nuclear pore complex (NPC), a complex required for the trafficking across the nuclear envelope. Functions as a scaffolding element in the nuclear phase of the NPC essential for normal nucleocytoplasmic transport of proteins and mRNAs. Involved in the quality control and retention of unspliced mRNAs in the nucleus; in association with TPR, regulates the nuclear export of unspliced mRNA species bearing constitutive transport element (CTE) in a NXF1- and KHDRBS1-independent manner. Mediates TPR anchoring to the nuclear membrane at NPC. The repeat-containing domain may be involved in anchoring other components of the NPC to the pore membrane. Possible DNA-binding subunit of the nuclear pore complex (NPC).
Cellular Location	Nucleus. Nucleus membrane. Nucleus, nuclear pore complex. Note=Tightly associated with the nuclear membrane and lamina (By similarity). Localized to the nucleoplasmic side of the nuclear pore complex (NPC) core structure, forming a fibrous structure called the nuclear basket. Dissociates from the

NPC structure early during prophase of mitosis. Integrated in the newly assembled nuclear envelope of postmitotic cells early in G1 Colocalized with NUP98 and TPR to the nuclear basket at the nucleoplasmic side of the NPC. Detected in diffuse and discrete intranuclear foci. Remained localized to the nuclear membrane after poliovirus (PV) infection. Colocalizes with NUP210L at the nuclear periphery in round spermatids and at the caudal extremity in elongating spermatids (PubMed:38129135). {ECO:0000250, ECO:0000269 | PubMed:38129135}

Images



Western blot analysis of Nup153 expression in K562 cell lysate.

Please note: All products are 'FOR RESEARCH USE ONLY. NOT FOR USE IN DIAGNOSTIC OR THERAPEUTIC PROCEDURES'.