

Ndufs4 Antibody

Rabbit mAb

Catalog # AP91992

Product Information

Application	WB, IHC, FC, IP
Primary Accession	O43181
Reactivity	Rat, Human, Mouse
Clonality	Monoclonal
Other Names	AQDQ; CI 18; CI AQDQ; NDUFS4;
Isotype	Rabbit IgG
Host	Rabbit
Calculated MW	20108

Additional Information

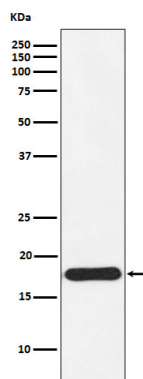
Dilution	WB 1:500~1:2000 IHC 1:50~1:200 IP 1:50 FC 1:100
Purification	Affinity-chromatography
Immunogen	A synthesized peptide derived from human Ndufs4
Description	Accessory subunit of the mitochondrial membrane respiratory chain NADH dehydrogenase (Complex I), that is believed not to be involved in catalysis. Complex I functions in the transfer of electrons from NADH to the respiratory chain.
Storage Condition and Buffer	Rabbit IgG in phosphate buffered saline , pH 7.4, 150mM NaCl, 0.02% sodium azide and 50% glycerol. Store at +4°C short term. Store at -20°C long term. Avoid freeze / thaw cycle.

Protein Information

Name	NDUFS4
Function	Accessory subunit of the mitochondrial membrane respiratory chain NADH dehydrogenase (Complex I), that is believed not to be involved in catalysis. Complex I functions in the transfer of electrons from NADH to the respiratory chain. The immediate electron acceptor for the enzyme is believed to be ubiquinone.
Cellular Location	Mitochondrion inner membrane; Peripheral membrane protein; Matrix side. Note=The interaction with BCAP31 mediates mitochondria localization.

Images

Western blot analysis of Ndufs4 expression in 293T cell lysate.



Please note: All products are 'FOR RESEARCH USE ONLY. NOT FOR USE IN DIAGNOSTIC OR THERAPEUTIC PROCEDURES'.