

NXF1 Antibody

Rabbit mAb

Catalog # AP91997

Product Information

Application	WB, IHC, IF, ICC, IP, IHF
Primary Accession	Q9UBU9
Reactivity	Human
Clonality	Monoclonal
Other Names	DmNXF1; MEX67; Mex67p; Mvb1; NXF1; Sbr; TAP;
Isotype	Rabbit IgG
Host	Rabbit
Calculated MW	70182

Additional Information

Dilution	WB 1:500~1:2000 IHC 1:50~1:200 ICC/IF 1:50~1:200 IP 1:50
Purification	Affinity-chromatography
Immunogen	A synthesized peptide derived from human NXF1
Description	Involved in the nuclear export of mRNA species bearing retroviral constitutive transport elements (CTE) and in the export of mRNA from the nucleus to the cytoplasm. The NXF1-NXT1 heterodimer is involved in the export of HSP70 mRNA in conjunction with THOC4 and THOC5.
Storage Condition and Buffer	Rabbit IgG in phosphate buffered saline , pH 7.4, 150mM NaCl, 0.02% sodium azide and 50% glycerol. Store at +4°C short term. Store at -20°C long term. Avoid freeze / thaw cycle.

Protein Information

Name	NXF1
Synonyms	TAP
Function	Involved in the nuclear export of mRNA species bearing retroviral constitutive transport elements (CTE) and in the export of mRNA from the nucleus to the cytoplasm (TAP/NFX1 pathway) (PubMed: 10924507). The NXF1-NXT1 heterodimer is involved in the export of HSP70 mRNA in conjunction with ALYREF/THOC4 and THOC5 components of the TREX complex (PubMed: 18364396 , PubMed: 19165146 , PubMed: 9660949). ALYREF/THOC4-bound mRNA is thought to be transferred to the NXF1-NXT1 heterodimer for export (PubMed: 18364396 , PubMed: 19165146 , PubMed: 9660949). Also involved in nuclear export of m6A-containing mRNAs: interaction between SRSF3 and YTHDC1 facilitates m6A-containing mRNA-binding to both SRSF3 and NXF1, promoting mRNA nuclear export (PubMed: 28984244).

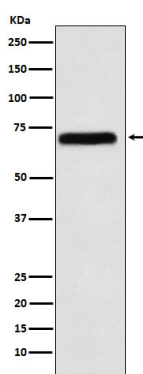
Cellular Location

Nucleus. Nucleus, nucleoplasm Nucleus speckle. Nucleus, nuclear pore complex. Nucleus envelope. Cytoplasm. Cytoplasm, Stress granule. Note=Localized predominantly in the nucleoplasm and at both the nucleoplasmic and cytoplasmic faces of the nuclear pore complex. Shuttles between the nucleus and the cytoplasm. Travels to the cytoplasm as part of the exon junction complex (EJC) bound to mRNA. The association with the TREX complex seems to occur in regions surrounding nuclear speckles known as perispeckles (PubMed:23826332). Nucleus; nuclear rim (PubMed:25662211)

Tissue Location

Expressed ubiquitously.

Images



Western blot analysis of NXF1 expression in K562 cell lysate.

Please note: All products are 'FOR RESEARCH USE ONLY. NOT FOR USE IN DIAGNOSTIC OR THERAPEUTIC PROCEDURES'.