

TSH beta Antibody

Rabbit mAb

Catalog # AP92001

Product Information

Application	WB, IHC
Primary Accession	P01222
Reactivity	Human
Clonality	Monoclonal
Other Names	CHNG4; TSHB;
Isotype	Rabbit IgG
Host	Rabbit
Calculated MW	15639

Additional Information

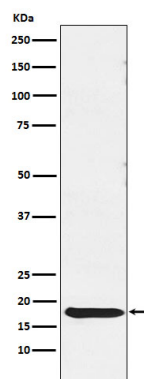
Dilution	WB 1:500~1:2000 IHC 1:50~1:200
Purification	Affinity-chromatography
Immunogen	A synthesized peptide derived from human TSH beta
Description	Various hormones are secreted from the anterior pituitary during development and growth. Thyroid Stimulating Hormone (TSH) is secreted from the anterior pituitary and controls thyroid structure and metabolism
Storage Condition and Buffer	Rabbit IgG in phosphate buffered saline , pH 7.4, 150mM NaCl, 0.02% sodium azide and 50% glycerol. Store at +4°C short term. Store at -20°C long term. Avoid freeze / thaw cycle.

Protein Information

Name	TSHB
Function	Indispensable for the control of thyroid structure and metabolism.
Cellular Location	Secreted.

Images

Western blot analysis of TSH beta expression in Human pituitary lysate.



Please note: All products are 'FOR RESEARCH USE ONLY. NOT FOR USE IN DIAGNOSTIC OR THERAPEUTIC PROCEDURES'.