

RRM1 Antibody

Rabbit mAb

Catalog # AP92011

Product Information

Application	WB, IHC, IF, FC, ICC, IP, IHF
Primary Accession	P23921
Reactivity	Rat, Human, Mouse
Clonality	Monoclonal
Other Names	RRM1; R1; RIR1; RR1;
Isotype	Rabbit IgG
Host	Rabbit
Calculated MW	90070

Additional Information

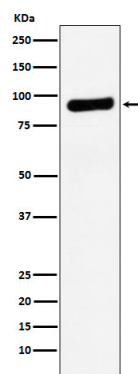
Dilution	WB 1:1000~1:5000 IHC 1:50~1:200 ICC/IF 1:50~1:200 IP 1:50 FC 1:50
Purification	Affinity-chromatography
Immunogen	A synthesized peptide derived from human RRM1
Description	Provides the precursors necessary for DNA synthesis. Catalyzes the biosynthesis of deoxyribonucleotides from the corresponding ribonucleotides.
Storage Condition and Buffer	Rabbit IgG in phosphate buffered saline , pH 7.4, 150mM NaCl, 0.02% sodium azide and 50% glycerol. Store at +4°C short term. Store at -20°C long term. Avoid freeze / thaw cycle.

Protein Information

Name	RRM1
Synonyms	RR1
Function	Provides the precursors necessary for DNA synthesis. Catalyzes the biosynthesis of deoxyribonucleotides from the corresponding ribonucleotides.
Cellular Location	Cytoplasm.

Images

Western blot analysis of RRM1 expression in A549 cell lysate.



Please note: All products are 'FOR RESEARCH USE ONLY. NOT FOR USE IN DIAGNOSTIC OR THERAPEUTIC PROCEDURES'.