

# Syntaxin 3 Antibody

Rabbit mAb

Catalog # AP92013

## Product Information

<b>Application</b>	WB, IHC, IF, FC, ICC, IHF
<b>Primary Accession</b>	<a href="#">Q13277</a>
<b>Reactivity</b>	Rat, Human, Mouse
<b>Clonality</b>	Monoclonal
<b>Other Names</b>	Stx3; STX3A; Syntaxin 3A;
<b>Isotype</b>	Rabbit IgG
<b>Host</b>	Rabbit
<b>Calculated MW</b>	33155

## Additional Information

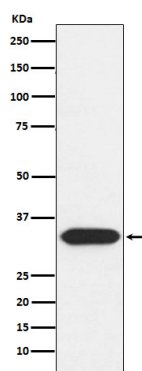
<b>Dilution</b>	WB 1:500~1:2000 IHC 1:50~1:200 ICC/IF 1:50~1:200 FC 1:50
<b>Purification</b>	Affinity-chromatography
<b>Immunogen</b>	A synthesized peptide derived from human Syntaxin 3
<b>Description</b>	Potentially involved in docking of synaptic vesicles at presynaptic active zones.
<b>Storage Condition and Buffer</b>	Rabbit IgG in phosphate buffered saline , pH 7.4, 150mM NaCl, 0.02% sodium azide and 50% glycerol. Store at +4°C short term. Store at -20°C long term. Avoid freeze / thaw cycle.

## Protein Information

<b>Name</b>	STX3
<b>Synonyms</b>	STX3A
<b>Function</b>	Potentially involved in docking of synaptic vesicles at presynaptic active zones. Apical receptor involved in membrane fusion of apical vesicles.
<b>Cellular Location</b>	[Isoform A]: Apical cell membrane; Single-pass type IV membrane protein. Note=Localized to the inner and outer plexiform layers, the cell body and the inner segments of photoreceptors {ECO:0000250 UniProtKB:Q64704}
<b>Tissue Location</b>	[Isoform A]: Expressed in small intestine, kidney, pancreas, placenta as well as in retina. Weaker expression in lung, liver and heart. Not expressed in brain and skeletal muscle [Isoform 3]: Ubiquitously expressed.

## Images

Western blot analysis of Syntaxin 3 expression in HepG2



cell lysate.

Please note: All products are 'FOR RESEARCH USE ONLY. NOT FOR USE IN DIAGNOSTIC OR THERAPEUTIC PROCEDURES'.